

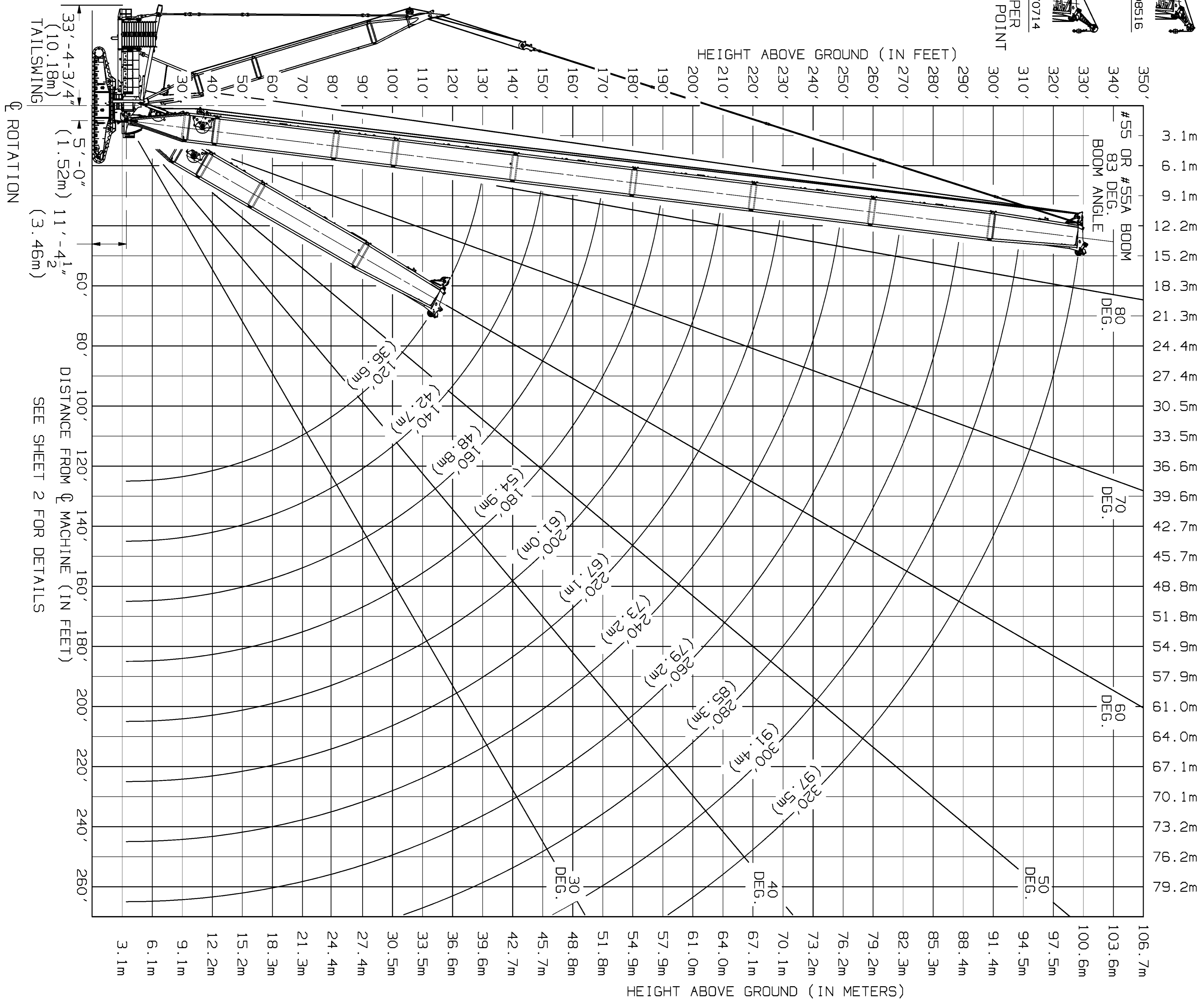
#A08516



#170714

UPPER
BOOM POINT

DISTANCE FROM Q MACHINE (IN METERS)



33'-4-3/4"
(10.18m)
TAILSWING

5'-0"
(1.52m)

11'-4 1/2"
(3.46m)

Q ROTATION

SEE SHEET 2 FOR DETAILS

HEIGHT ABOVE GROUND (IN METERS)

HEIGHT ABOVE GROUND (IN FEET)

106.7m
103.6m
100.6m
97.5m
94.5m
91.4m
88.4m
85.3m
82.3m
79.2m
76.2m
73.2m
70.1m
67.1m
64.0m
61.0m
57.9m
54.9m
51.8m
48.8m
45.7m
42.7m
39.6m
36.6m
33.5m
30.5m
27.4m
24.4m
21.3m
18.3m
15.2m
12.2m
9.1m
6.1m
3.1m

350'
340'
330'
320'
310'
300'
290'
280'
270'
260'
250'
240'
230'
220'
210'
200'
190'
180'
170'
160'
150'
140'
130'
120'
110'
100'
90'
80'
70'
60'
50'
40'
30'

DATE	04-29-04	SCALE	1/4" = 1'	MANITOWOC CRANES, Inc.	REVISION DATE
DRAWING NO.	A10236	BY/CHKD	BR/CDC	Manitowoc, Wisconsin	
		DATE	04/23/04	MODEL 18000	
				#55 OR #55A BOOM &	
				100' #56 MAST	
DIAGRAM - RANGE ASSEMBLY					