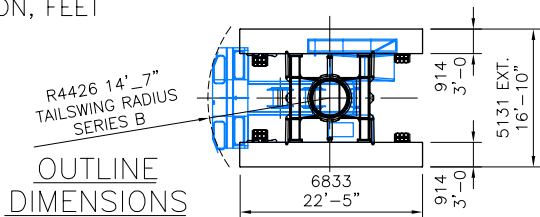


RANGE DIAGRAM

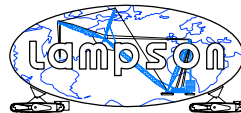


OUTLINE DIMENSIONS

**NOTICE:**  
 This drawing is intended only as a guide in job planning. When planning a lift contact LAMPSON INTERNATIONAL L.L.C. for determination of crane configuration and issuance of associated capacity charts suitable for the execution of your lift.

Title:  
 MANITOWOC 222 SERIES B LIFT CRANE  
 RANGE DIAGRAM AND OUTLINE DIMENSIONS

Scale: 1 : 750  
 Dwg. No.: 222 S B



**LAMPSON**  
 INTERNATIONAL LLC

## Manitowoc M222 Crawler

The M222 is in a class of its own when it comes to safety features including electronic over hydraulic controls, insulated climate controlled cabin and hi-visibility windshields.

The M222 has a maximum boom of 61m and can lift loads of 90 Te at 3.0m and 24.4 Te at 10.0m.

The M222 is designed for efficient transport as it can be carried on one 50Te low loader in minimum configuration.



*Top Right: M222 at Newcastle Port loading crane components.*

*Bottom Right: M222 at Newcastle Harbor, Australia*

*Below: M222 loading out equipment*

