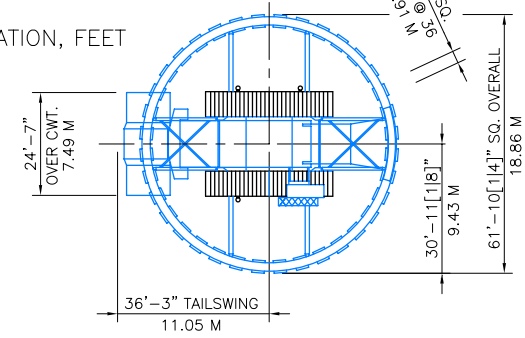


RANGE DIAGRAM

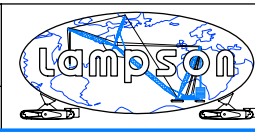
DISTANCE FROM C/L OF ROTATION, FEET

OUTLINE DIMENSIONS



**NOTICE:**  
This drawing is intended only as a guide in job planning. When planning a lift contact LAMPSON INTERNATIONAL L.L.C. for determination of crane configuration and issuance of associated capacity charts suitable for the execution of your lift.

|   |                       |
|---|-----------------------|
| Title:<br>MANITOWOC 4600 S4 RINGER S3<br>RANGE DIAGRAM AND OUTLINE DIMENSIONS |                       |
| Scale:<br>1 : 1000  | Dwg. No.:<br>4600RING |



**LAMPSON INTERNATIONAL LLC.**

## Lampson Manitowoc 4600W Ringer Crane

The Manitowoc ringer crane is able to lift 680 Te and can have a main boom of up to 122.0m and attachments of luffing and fixed jibs up to 79.2m

The Ringer configuration means that the crane is configured with additional counterweight and higher capacity components to increase lift capacity. The crane uses the attached ring on which to rotate the boom and counterweight, providing greater stability.

