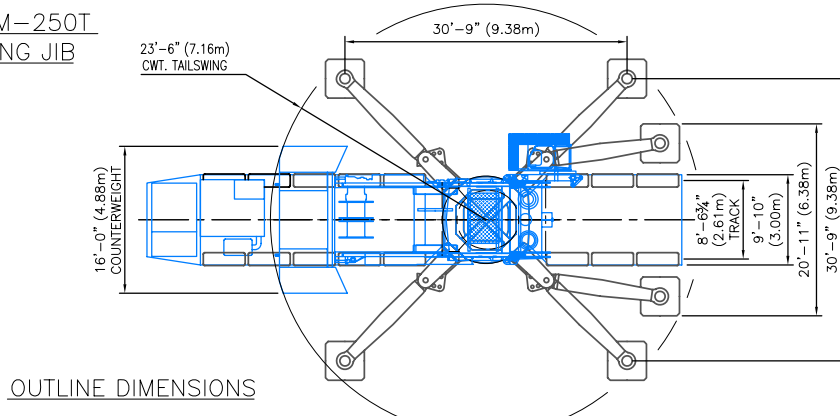


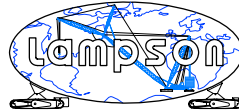
RANGE DIAGRAM – M-250T
WITH #133 LUFFING JIB



OUTLINE DIMENSIONS

NOTICE:
This drawing is intended only as a guide in job planning. When planning a lift contact LAMPSON INTERNATIONAL L.L.C. for determination of crane configuration and issuance of associated capacity charts suitable for the execution of your lift.

Title: MANITOWOC M-250T TRUCK CRANE
WITH LUFFING JIB
RANGE DIAGRAM AND OUTLINE DIMENSIONS
Scale: 1 : 750
Drg. No.: M-250T-02



LAMPSON
INTERNATIONAL L.L.C.

Manitowoc M-250T Crane

The M250 Truck crane can fully assemble and disassemble itself. The crane has a capacity of 272Te at 5.5m and 164.8 Te at 10m. The maximum boom length is 91.4m, it also can come with a fixed or luffing jib.



Above: At work the M250T is placing boxed sections of a bridge.

Top Right: The M250T lifts bridge beams into place.

Right: The M250T is put through its testing at Lampson America.

Below: The M250T is packed up for road transport applying only 6Te / axle.

