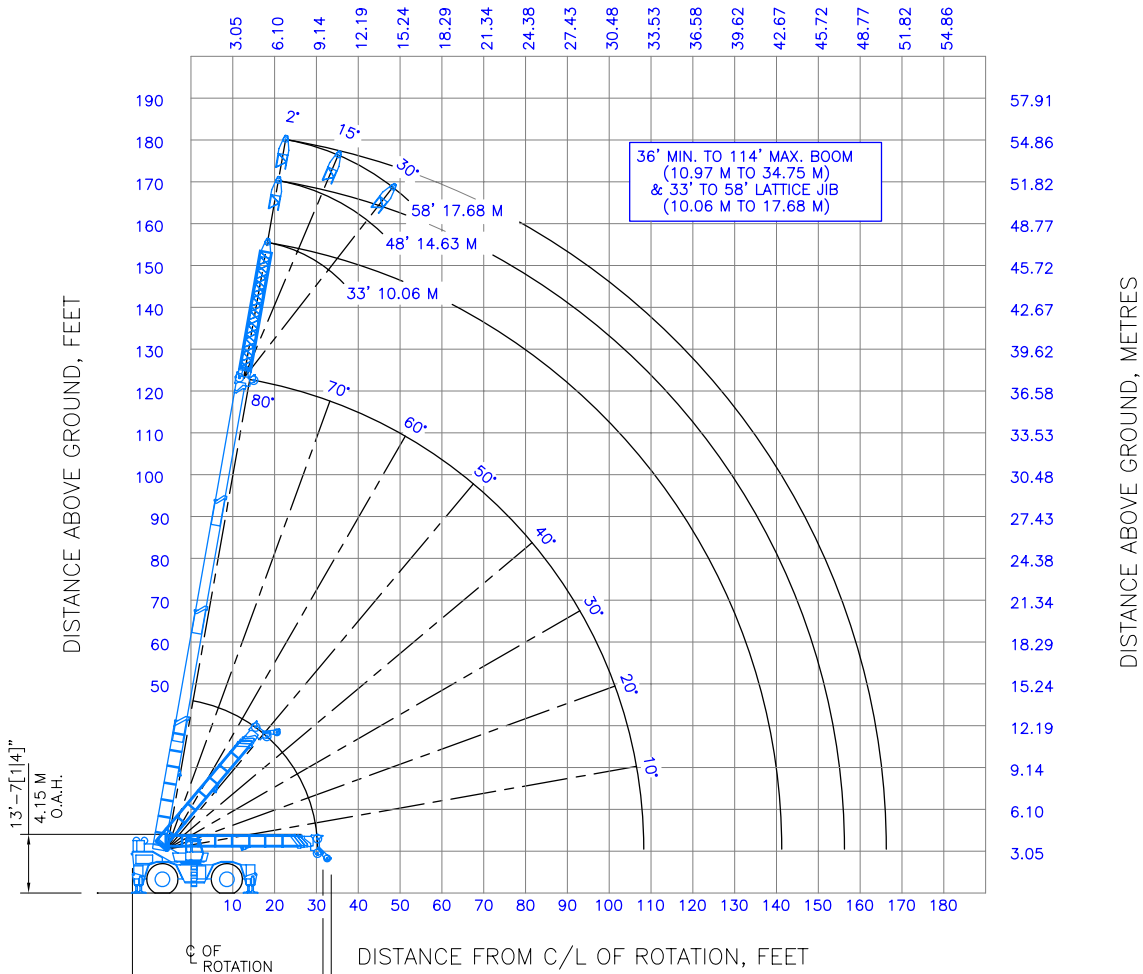


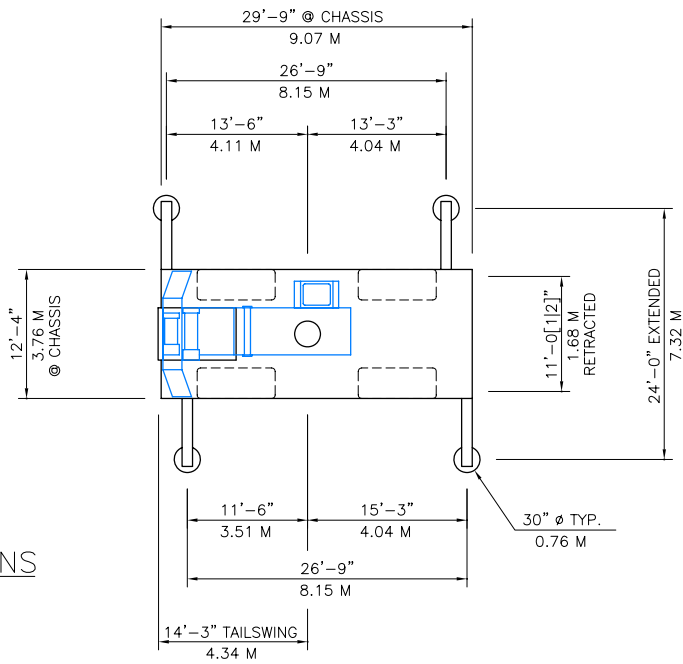
DISTANCE FROM C/L OF ROTATION, METRES



45'-6" [314] O.A.L. 13.89 M
 23' [916] 0.60 M
 G.V.W.: 133711 LBS. (60.65 Te.)

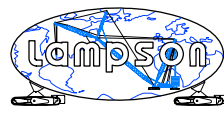
RANGE DIAGRAM

OUTLINE DIMENSIONS



NOTICE:
 This drawing is intended only as a guide in job planning. When planning a lift contact LAMPSON INTERNATIONAL LLC for determination of crane configuration and issuance of associated capacity charts suitable for the execution of your lift.

Title: GROVE RT-990 HYDRAULIC CRANE RANGE DIAGRAM AND OUTLINE DIMENSIONS	
Scale: 1 : 500	Dwg. No.: RT-990



LAMPSON INTERNATIONAL LLC

Grove RT 990 Hydraulic Crane

The RT 990 hydraulic crane with 80 tonne capacity and four wheel drive, ensures this crane is a popular site model suited to most project activities.

This rough terrain vehicle like other ones that Lampson owns to take care of whole projects, supplying cranes from our trani-lifts all the way down to cranes of this size and even smaller.

Right & Below: 80 tonne rough terrain crane undertaking pre-shipment inspections at Lampson's Toronto facility, Australia.

