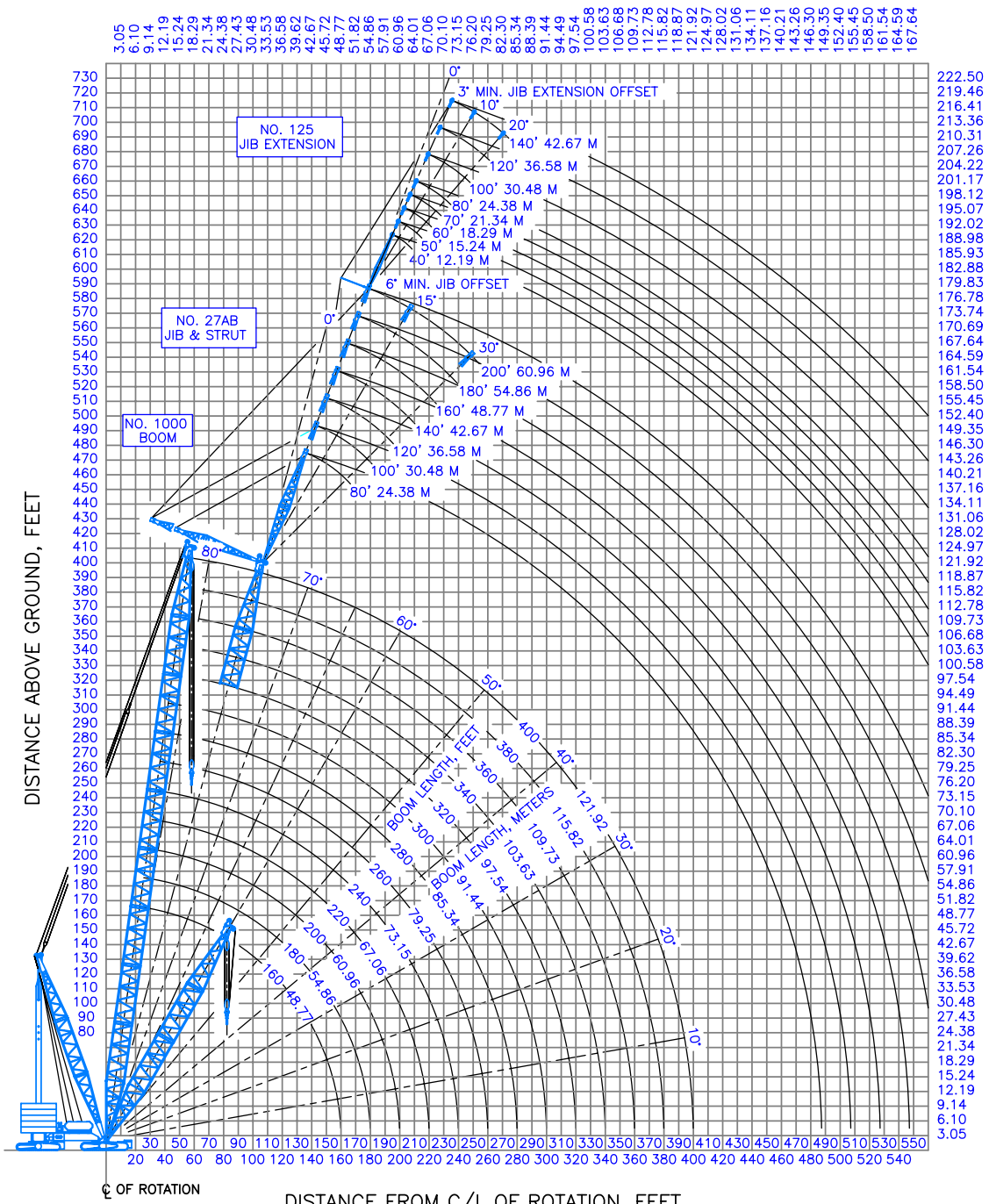


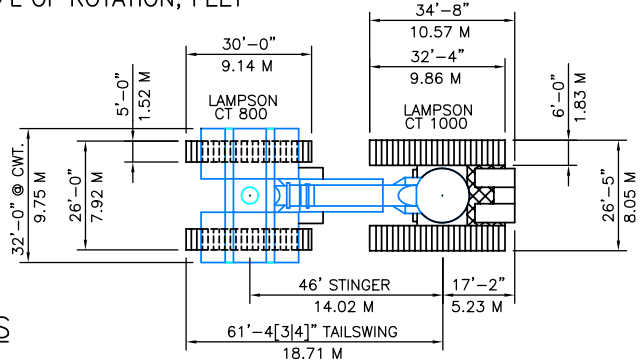
DISTANCE FROM C/L OF ROTATION, METRES



RANGE DIAGRAM

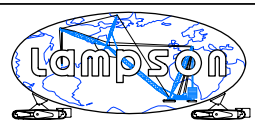
OUTLINE DIMENSIONS

NOTE: CRAWLERS ROTATE THRU 360°.



**NOTICE:**  
This drawing is intended only as a guide in job planning. When planning a lift contact LAMPSON INTERNATIONAL L.L.C. for determination of crane configuration and issuance of associated capacity charts suitable for the execution of your lift.

Title: LTL-1000 TRANSI-LIFT CRANE RANGE DIAGRAM AND OUTLINE DIMENSIONS  
Scale: 1 : 1250  
Dwg. No.: LTL-1000



LAMPSON INTERNATIONAL LLC

## Lampson LTL-1000 Transi-Lift Crawler Crane

The LTL-1000 is crane almost identical to the LTL-1100, the only differences is a smaller boom and a few less counterweights.

As with all the LTL cranes the size and capacity of the cranes are astronomical but in saying that they are capable of being built away from construction sites and walked into place, meaning that less disturbance occurs to the rest of the project and that critical paths can be minimalised.



*Above: The LTL-1000 performing lifts in a tight area to build a Benzene removal plant at Shell Refinery, Corio, Victoria, Australia. In the background there is a QC-4600 performing lift at a polymer plant.*

*Beside: One of the stabiliser columns that was placed using a tailing crane (Manitowoc 999) to lift of our goldhofer trailer which will be driven out off site before the tailing crane will walk forward.*

*Lifts were ranging from 10Te to 200Te and included almost 30 items at this site. All items were brought in modular form as to decrease onsite labor costs, construction time and increase safety.*