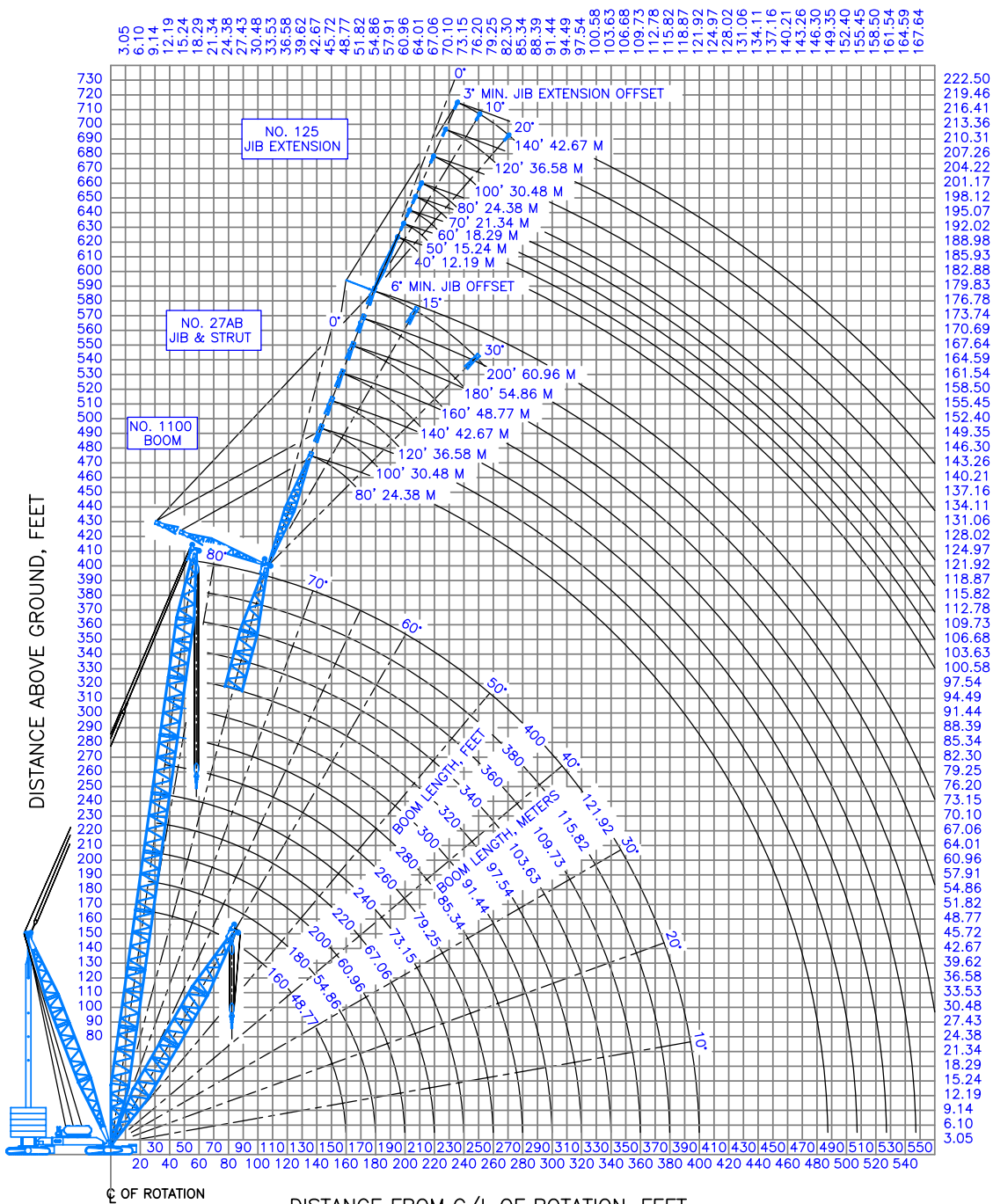
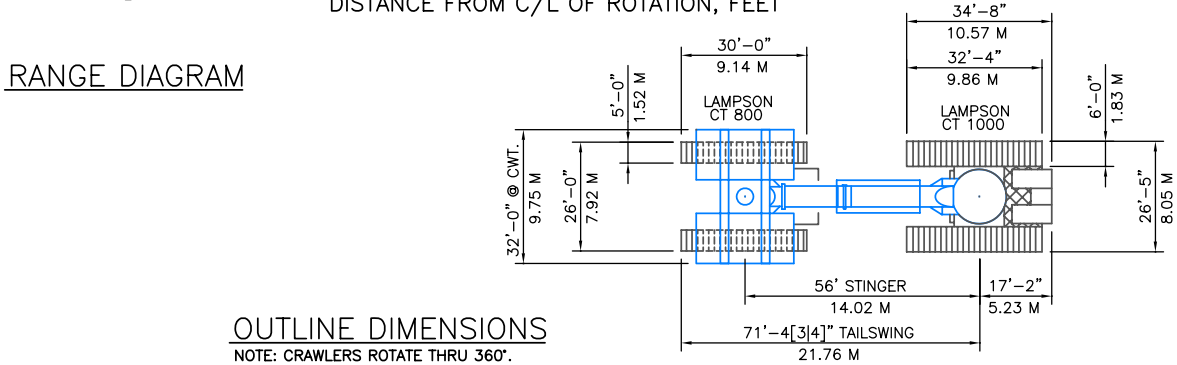


DISTANCE FROM C/L OF ROTATION, METRES



RANGE DIAGRAM

DISTANCE FROM C/L OF ROTATION, FEET

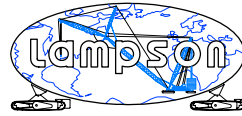


OUTLINE DIMENSIONS

NOTE: CRAWLERS ROTATE THRU 360°.

NOTICE:
This drawing is intended only as a guide in job planning. When planning a lift contact LAMPSON INTERNATIONAL L.L.C. for determination of crane configuration and issuance of associated capacity charts suitable for the execution of your lift.

Title:	LTL-1100 TRANSI-LIFT CRANE RANGE DIAGRAM AND OUTLINE DIMENSIONS
Scale:	1 : 1250
Dwg. No.:	LTL-1100



**LAMPSON
INTERNATIONAL L.L.C.**

Lampson LTL-1100 Transi-Lift Crawler Crane

The LTL-1100 is a mid range Transi-lift; ideally suited to heavy lifting within the confines of refineries due to the small footprint and low ground bearing pressure.



Above: During a recent Rejuvenation Project of a refinery Sydney, NSW, the LTL-1100 performed lifts effortlessly within the confines of a brown-field site. Lampson provided Project Management of Heavy Lift Cranes and Personnel; the project was a great success.