

Lampson

Lampson (Australia) Pty Ltd
www.lampson.com.au
02 4941 0400

GROVE®


RT530E ■

**product
guide**



 30 tonnes

 29 m

 7.9 - 13.7 m

 44.5 m

Rough Terrain Crane • Geländekran • Grue Tout-Terrain
Grúa Todo Terreno • Autogru Fuoristrada

RATED LIFTING CAPACITIES IN KILOGRAMS 8.8 m - 29.0 m BOOM

ON OUTRIGGERS FULLY EXTENDED - 360°

Radius in Meters	#0001							
	Main Boom Length in Meters							
	8.8	12.2	15.2	18.3	21.3	24.4	27.4	29.0
2.5	30,000 (65)							
3	27,000 (61)	22,700 (70)	21,275 (74.5)					
3.5	24,200 (57)	22,700 (67.5)	20,625 (72.5)					
4	22,050 (53)	21,050 (64.5)	19,725 (70.5)	*17,600 (76)				
4.5	19,850 (48.5)	20,000 (62)	18,750 (68.5)	16,350 (72.5)	*11,250 (76)			
5	17,875 (43.5)	18,300 (59)	17,125 (66)	15,500 (71)	10,600 (74)	*9,525 (76)		
6	14,250 (31.5)	14,700 (53.5)	14,775 (62)	13,550 (67.5)	9,720 (71)	8,580 (74)	*7,375 (76)	
7		12,300 (47)	12,500 (57.5)	11,900 (64)	8,845 (68)	7,475 (71.5)	6,780 (74)	*6,395 (76)
8		10,300 (39.5)	10,500 (52.5)	10,375 (60)	7,825 (65)	6,890 (69)	6,165 (72)	5,900 (73)
9		8,750 (30.5)	8,955 (47.5)	8,865 (56.5)	7,270 (62)	6,400 (66)	5,760 (69.5)	5,485 (71)
10		7,530 (17)	7,425 (42)	7,370 (52.5)	6,810 (59)	5,985 (63.5)	5,330 (67.5)	5,125 (69)
12			5,370 (27.5)	5,350 (43.5)	5,360 (52)	5,265 (58)	4,715 (62.5)	4,485 (64.5)
14				4,045 (32.5)	4,050 (44.5)	4,065 (52)	3,685 (57.5)	3,495 (60)
16	See Note 16			3,130 (15)	3,145 (36)	3,160 (45.5)	3,180 (52.5)	3,150 (55)
18					2,450 (24)	2,465 (38)	2,490 (46.5)	2,505 (50)
20						1,925 (29)	1,950 (40)	1,960 (44)
22						1,490 (14.5)	1,520 (32.5)	1,535 (37.5)
24							1,175 (22.5)	1,190 (30)
26								900 (19)
0.1A (kg)	300	280	265	255	250	245	245	240
Minimum boom angle (°) for indicated length (no load)								0
Maximum boom length (m) at 0° boom angle (no load)								29.0

NOTE: () Boom angles are in degrees.

#LMI operating code. Refer to LMI manual for operating instructions.

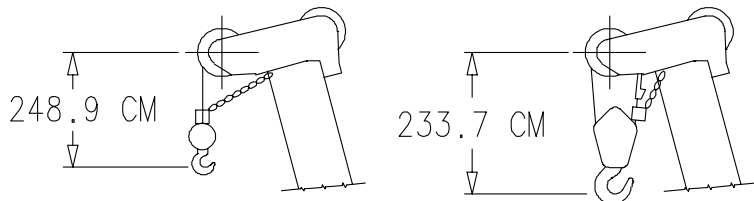
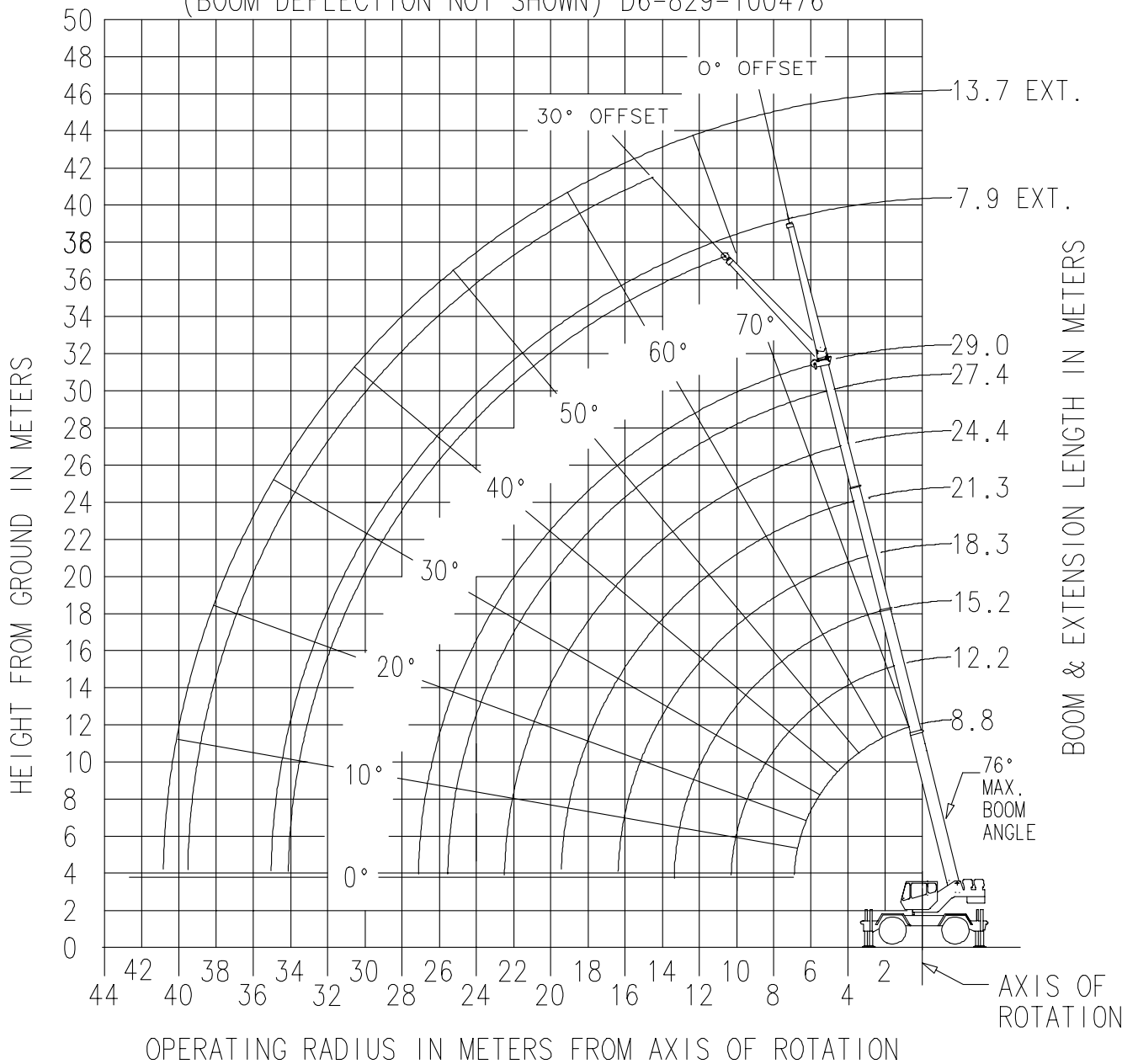
*This capacity is based on maximum boom angle.

Lifting Capacities at Zero Degree Boom Angle On Outriggers Fully Extended - 360°								
Boom Angle	Main Boom Length in Meters							
	8.8	12.2	15.2	18.3	21.3	24.4	27.4	29.0
0 deg.	11,825 (6.9)	6,940 (10.3)	4,405 (13.4)	2,965 (16.4)	2,030 (19.5)	1,395 (22.5)	940 (25.6)	755 (27.1)

NOTE: () Reference radii in meters.

A6-829-102266

WORKING RANGE DIAGRAM
 (BOOM DEFLECTION NOT SHOWN) D6-829-100476



DIMENSIONS ARE FOR LARGEST GROVE FURNISHED HOOKBLOCK AND HEADACHE BALL, WITH ANTI-TWO BLOCK ACTIVATED.