

Grove RT760E

Product Guide

Lampson (Australia) Pty Ltd
www.lampson.com.au
02 4941 0400



55 t



33,5 m



10,1 - 29,2 m

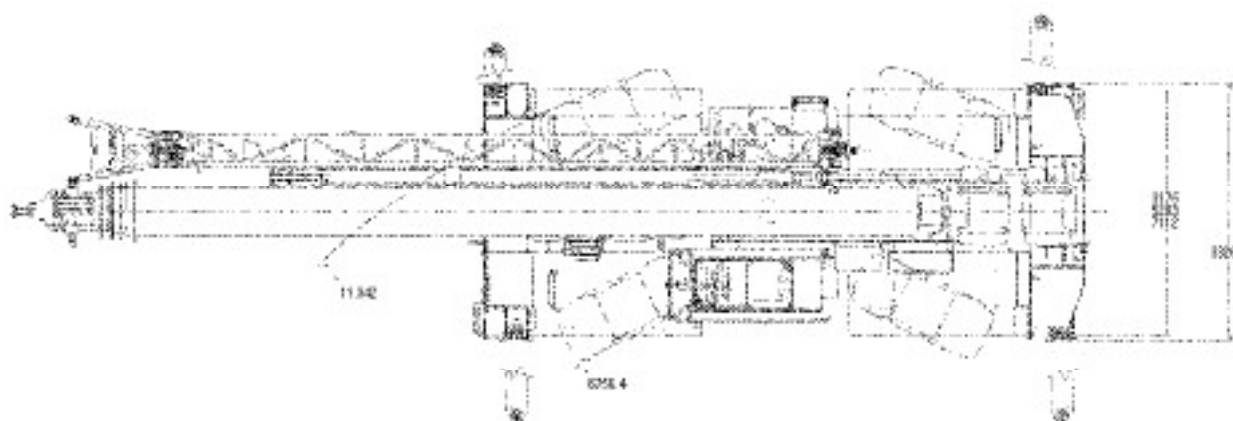
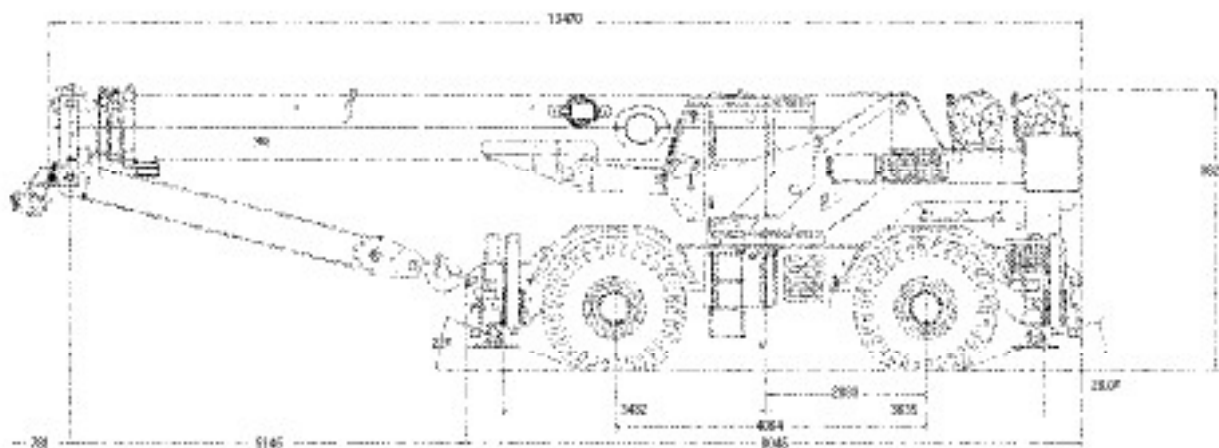


65 m

Rough Terrain Crane • Geländekran
Grue Tout-Terrain • Grúa Todo Terreno
Autogru Fuoristrada • Grua RT

Кран для использования на пересеченной местности

Dimensions • Abmessungen • Encombrement • Dimensiones
 • Dimensioni • Dimensões • Размеры



Note: Reference dimensions in mm • Hinweis: Bezugsmaße in mm • Remarque : cotes de référence en mm •
 Nota: Dimensiones de referencia en mm • Nota: Dimensioni di riferimento in mm • Nota: Dimensões de referência em mm •
 Примечание: Справочные размеры (в мм)

Load charts • Traglasten • Capacités de levage • Capacidades Capacità • Diagramas de carga • Таблицы грузоподъемности

Working range • Arbeitsbereiche • Diagramme de levage • Gama de trabajo • Area di lavoro
Intervalo de funcionamento • Грузовысотные характеристики



10,8 - 33,5 m



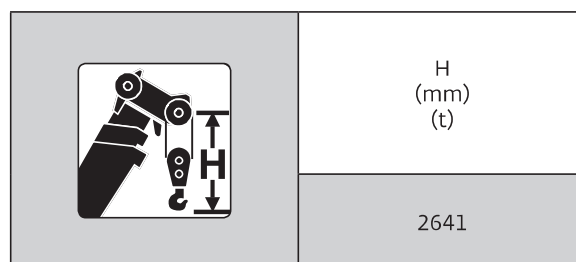
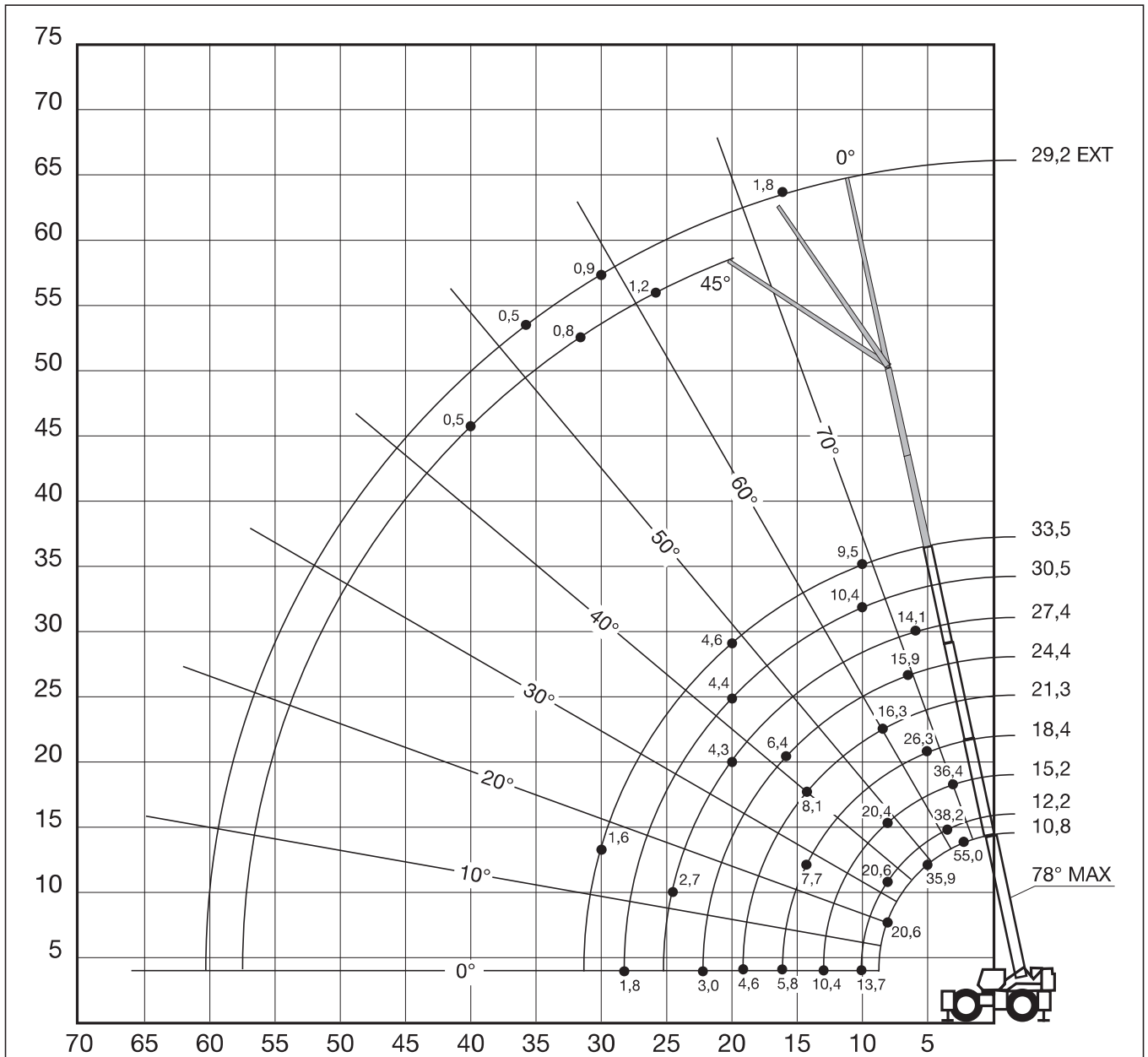
100 %



360°



5,5 t



Load charts • Traglasten • Capacités de levage • Capacidades Caracità • Diagramas de carga • Таблицы грузоподъемности

Telescopic boom • Teleskopausleger • Flèche principale • Pluma telescópica • Braccio telescopico
Lança telescópica • Телескопическая стрела



10,8 - 33,5 m



100%



360°



5,5 t



DIN/ISO

m	10,8	12,2	15,2	18,4	21,3	24,4	27,4	30,5	33,5
2,5	55,000	-	-	-	-	-	-	-	-
3,0	50,000	38,275	36,375	28,350	-	-	-	-	-
3,5	46,100	38,275	36,375	28,350	16,675	-	-	-	-
4,0	42,200	37,975	35,525	28,075	16,675	-	-	-	-
4,5	38,950	37,550	32,800	27,700	16,675	16,675	-	-	-
5,0	35,900	35,250	30,325	26,350	16,675	16,675	14,050	-	-
6,0	30,200	29,975	26,325	23,250	16,675	16,675	14,050	13,200	-
7,0	24,950	24,500	23,100	20,575	16,675	15,925	13,775	12,625	10,875
8,0	20,650	20,600	20,400	18,325	16,300	14,850	13,075	11,925	10,650
9,0	13,650	17,250	17,200	16,425	15,275	13,350	11,675	11,075	10,050
10,0	-	13,700	14,400	14,400	13,950	12,125	10,675	10,350	9,465
12,0	-	-	10,375	10,500	10,900	10,150	9,275	8,775	8,475
14,0	-	-	-	7,700	8,060	8,310	7,920	7,735	7,735
16,0	-	-	-	5,765	6,080	6,360	6,630	6,825	6,825
18,0	-	-	-	-	4,580	4,945	5,290	5,535	5,695
20,0	-	-	-	-	-	3,870	4,255	4,440	4,590
22,0	-	-	-	-	-	3,000	3,435	3,580	3,720
24,0	-	-	-	-	-	-	2,745	2,890	3,025
26,0	-	-	-	-	-	-	-	2,320	2,450
28,0	-	-	-	-	-	-	-	1,830	1,970
30,0	-	-	-	-	-	-	-	-	1,555



85%

m	10,8	12,2	15,2	18,4	21,3	24,4	27,4	30,5	33,5
3,0	55,000	38,275	36,375	28,350	-	-	-	-	-
3,5	47,700	38,275	36,375	28,350	16,675	-	-	-	-
4,0	42,875	37,975	36,375	28,075	16,675	-	-	-	-
4,5	39,250	37,550	36,375	27,700	16,675	16,675	-	-	-
5,0	36,225	35,250	34,350	26,350	16,675	16,675	14,050	-	-
6,0	30,350	29,975	29,600	23,250	16,675	16,675	14,050	13,200	-
7,0	26,325	26,100	25,800	20,575	16,675	15,925	13,775	12,625	10,875
8,0	21,100	22,625	22,125	18,525	16,300	14,850	13,075	11,925	10,650
9,0	13,650	19,550	18,475	17,375	15,275	13,350	11,675	11,075	10,050
10,0	-	13,700	16,125	15,125	13,950	12,125	10,675	10,350	9,46
12,0	-	-	11,425	11,575	10,975	10,150	9,275	8,775	8,475
14,0	-	-	-	8,615	8,690	8,330	7,920	7,735	7,735
16,0	-	-	-	6,565	6,860	7,065	6,825	6,825	6,825
18,0	-	-	-	-	5,260	5,625	5,695	5,695	5,695
20,0	-	-	-	-	-	4,485	4,830	4,715	4,715
22,0	-	-	-	-	-	3,560	4,000	3,845	3,845
24,0	-	-	-	-	-	-	3,265	3,130	3,130
26,0	-	-	-	-	-	-	-	2,605	2,605
28,0	-	-	-	-	-	-	-	2,220	2,170
30,0	-	-	-	-	-	-	-	-	1,840