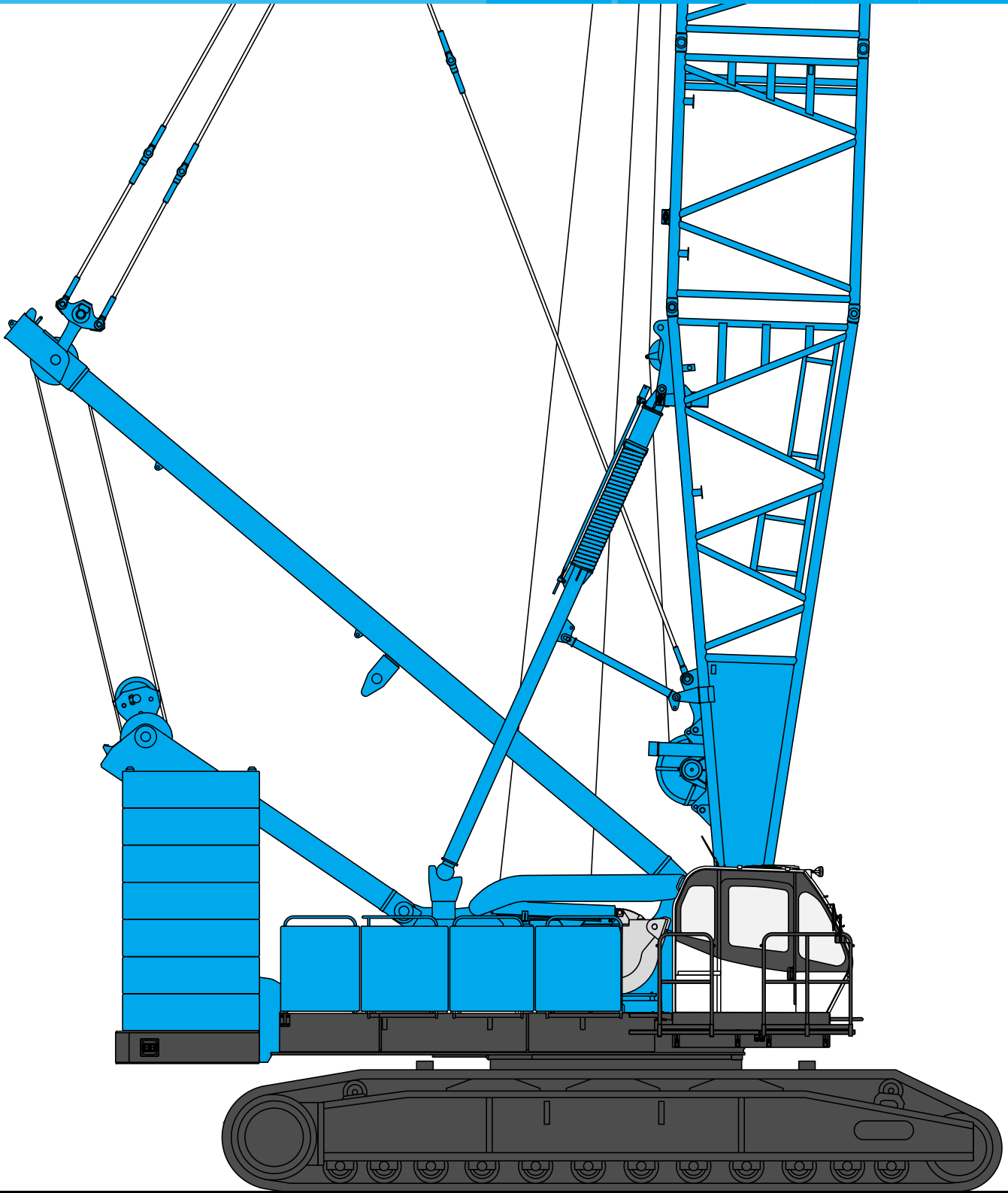


HYDRAULIC CRAWLER CRANE

CKE2500

KOBELCO
Lampson

Lampson (Australia) Pty Ltd
www.lampson.com.au
02 4941 0400
Model: CKE2500-2



Lampson

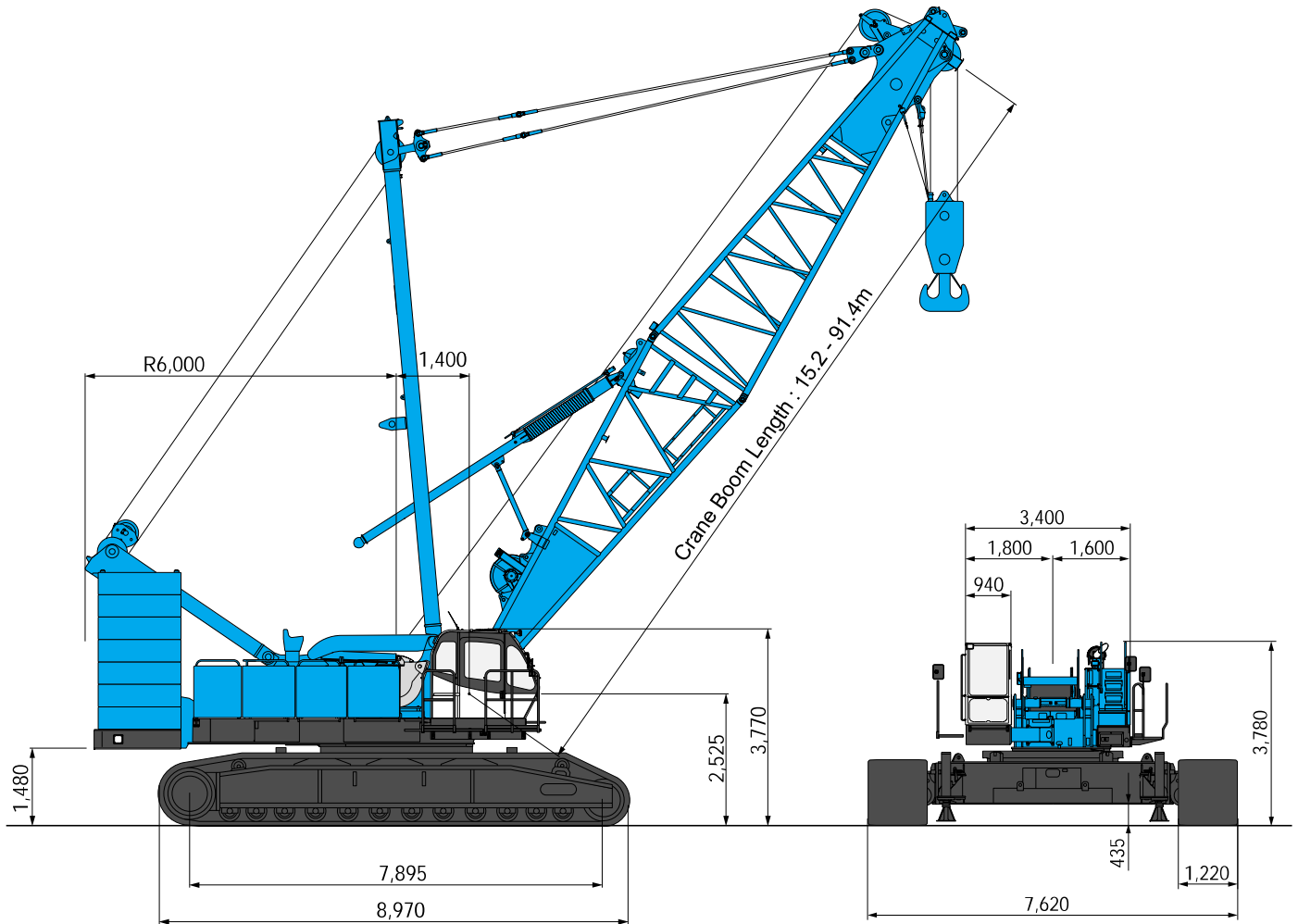
Lampson Australia
info@lampson.com.au
02 4941 0400

Max. Lifting Capacity: 250 t x 4.6 m
Max. Crane Boom Length: 91.4 m
Max. Fixed Jib Combination: 76.2 + 30.5 m
Max. Luffing Jib Combination: 61.0 + 61.0 m

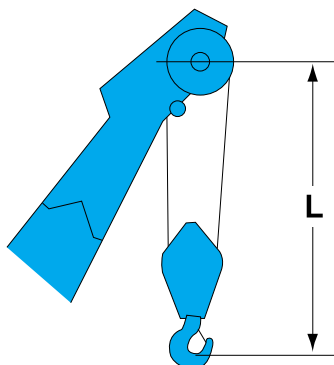
GENERAL DIMENSIONS

Crane Boom

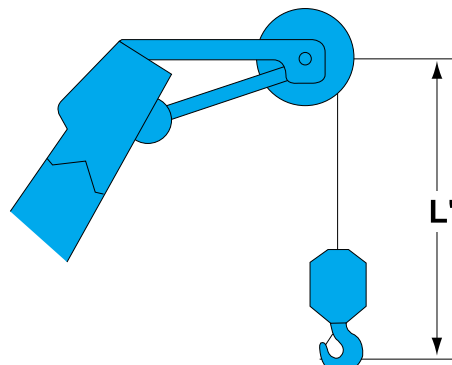
(Unit: mm)



Limit of Hook Lifting



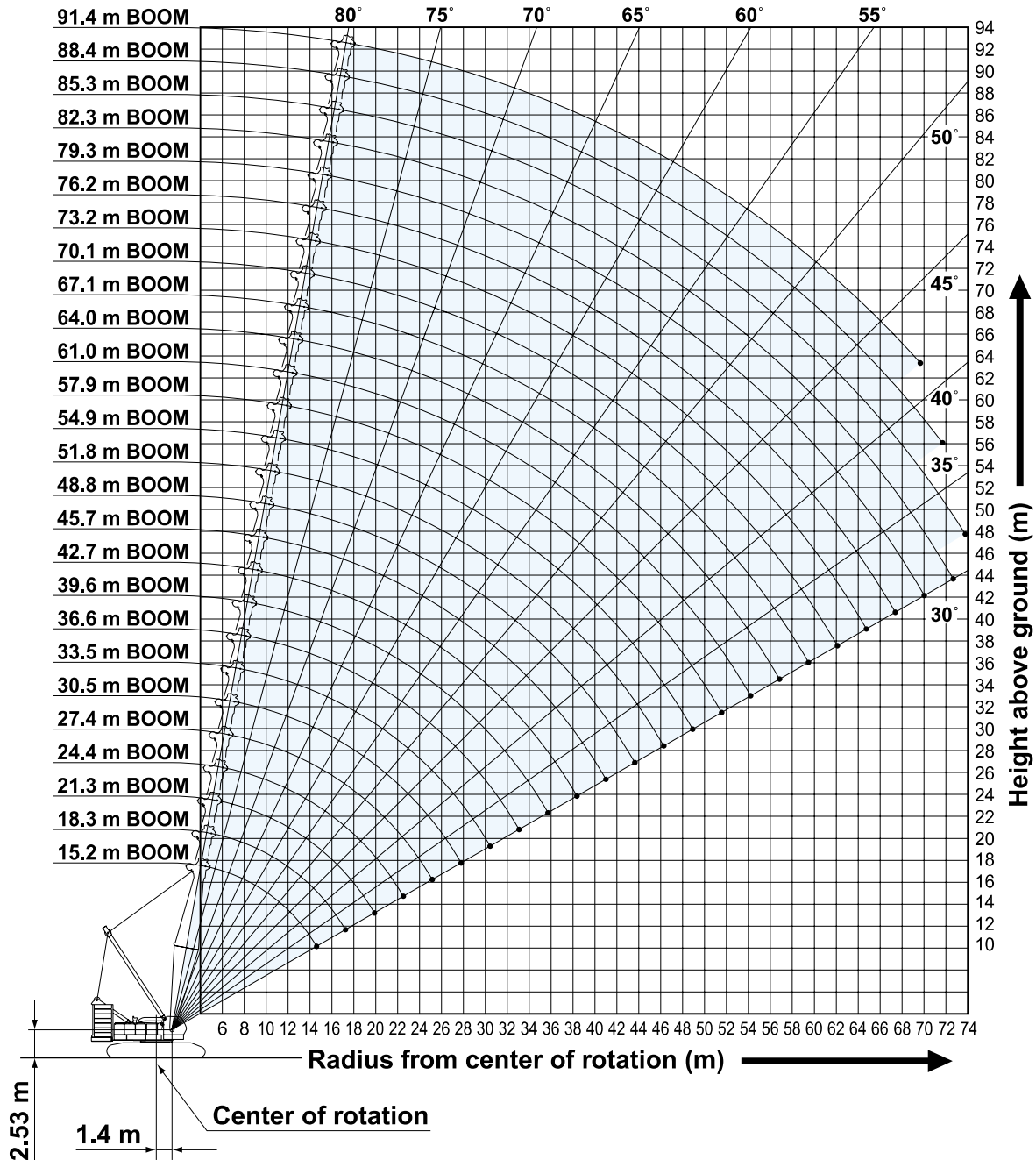
| Hook | L |
|------------|-------|
| 250 t hook | 5.3 m |
| 150 t hook | 5.9 m |
| 70 t hook | 4.9 m |
| 35 t hook | 4.7 m |



| Hook | L' |
|------------------|-------|
| 35 t hook | 3.8 m |
| 13.5 t ball hook | 3.5 m |

WORKING RANGES AND LIFTING CAPACITIES

Crane Boom Working Ranges



NOTES:

1. Ratings according to EN13000.
2. Ratings in metric tons for 360° working area.
3. Operating radius is the horizontal distance from center of rotation to a vertical line through the center of gravity of the load.
4. Weight of hook block(s), slings and other load handling accessories is included in rated load. Their total weight must be subtracted from rated load to obtain weight that can be lifted.
5. Ratings shown are based on freely suspended loads and make no allowance for such factors as wind effect on lifted load, ground conditions out-of-level, operating speeds or any other condition that could be detrimental to the safe operation of this equipment. Operator, therefore, has the responsibility to judge the existing conditions and reduce lifted loads and operating speeds accordingly.
6. Ratings are for operation on a firm and level surface, up to 1% gradient.
7. At radii and boom lengths where no ratings are shown on chart, operation is not intended nor approved.
8. Boom inserts and guy lines must be arranged as shown in the

9. "Operator's Manual".
10. Boom hoist reeving is 16 part line.
11. Gantry must be in raised position for all conditions.
12. Boom backstops are required for all boom lengths.
13. Ratings shown in are determined by the strength of the boom or other structural component.
14. When erecting or lowering the boom length of 88.4 m or over, the pillow plate for erection must be placed at the end of crawlers.
15. Instruction in the "Operator's Manual" must be strictly observed when operating the machine.
16. Crane boom ratings: Deduct weight of hook block, slings, and all other load handling accessories from crane boom ratings shown.
17. Auxiliary sheave ratings for crane boom: Deduct weight of hook block, slings, and all other load handling accessories from auxiliary sheave ratings for crane boom shown.
18. Crane boom lengths for auxiliary sheave mounting are 15.2 m to 88.4 m.



Crane Boom Lifting Capacity

Unit: metric ton

Counterweight: 90.0 t, Carbody weight: 24.0 t

| Working radius (m) | Boom Length (m) | | | | | | | | | | | | | Working radius (m) | |
|--------------------|-----------------|-------------|-------------|-------------|-------------|-------------|-------------|-------------|-------------|-------------|-------------|-------------|-------------|--------------------|--------|
| | 15.2 | 18.3 | 21.3 | 24.4 | 27.4 | 30.5 | 33.5 | 36.6 | 39.6 | 42.7 | 45.7 | 48.8 | 51.8 | | |
| 4.6 | 4.6 m/250.0 | | | | | | | | | | | | | | 4.6 |
| 5.0 | 230.7 | 226.7 | 5.5m/205.0 | | | | | | | | | | | | 5.0 |
| 6.0 | 191.5 | 191.5 | 191.1 | 6.1 m/183.0 | 6.6 m/174.5 | | | | | | | | | | 6.0 |
| 7.0 | 165.9 | 165.6 | 165.2 | 165.0 | 164.7 | 7.1 m/154.2 | 7.7 m/143.8 | | | | | | | | 7.0 |
| 8.0 | 146.1 | 145.8 | 145.4 | 145.2 | 144.9 | 144.6 | 141.4 | 8.2 m/127.3 | 8.7 m/115.7 | | | | | | 8.0 |
| 9.0 | 130.4 | 130.1 | 129.8 | 129.6 | 129.2 | 127.0 | 127.3 | 123.8 | 114.8 | 9.2 m/107.2 | 9.8 m/98.3 | | | | 9.0 |
| 10.0 | 117.7 | 117.4 | 117.1 | 116.9 | 114.7 | 115.0 | 113.3 | 110.5 | 107.4 | 103.8 | 97.0 | 10.3 m/92.6 | 10.8 m/84.7 | 10.0 | 10.0 |
| 12.0 | 90.0 | 90.2 | 90.2 | 90.2 | 90.2 | 90.1 | 90.0 | 89.9 | 87.8 | 85.9 | 83.8 | 82.0 | 79.5 | 12.0 | 12.0 |
| 14.0 | 72.2 | 72.4 | 72.4 | 72.4 | 72.3 | 72.2 | 72.1 | 72.0 | 72.0 | 72.0 | 70.8 | 69.4 | 68.0 | 14.0 | 14.0 |
| 16.0 | 4.8 m/65.7 | 60.2 | 60.2 | 60.2 | 60.0 | 59.9 | 59.8 | 59.8 | 59.7 | 59.6 | 59.4 | 59.3 | 58.7 | 16.0 | 16.0 |
| 18.0 | | 17.5 m/53.5 | 51.3 | 51.3 | 51.1 | 51.1 | 50.9 | 50.8 | 50.7 | 50.7 | 50.4 | 50.3 | 50.2 | 18.0 | 18.0 |
| 20.0 | | | 44.6 | 44.6 | 44.4 | 44.3 | 44.1 | 44.0 | 43.9 | 43.9 | 43.6 | 43.5 | 43.4 | 20.0 | 20.0 |
| 22.0 | | | 20.1 m/44.3 | 39.3 | 39.1 | 39.0 | 38.7 | 38.7 | 38.6 | 38.5 | 38.3 | 38.2 | 38.0 | 22.0 | 22.0 |
| 24.0 | | | | 22.7 m/37.6 | 34.8 | 34.7 | 34.5 | 34.4 | 34.3 | 34.2 | 34.0 | 33.8 | 33.7 | 24.0 | 24.0 |
| 26.0 | | | | | 25.4 m/32.3 | 31.3 | 30.9 | 30.8 | 30.7 | 30.7 | 30.4 | 30.3 | 30.1 | 26.0 | 26.0 |
| 28.0 | | | | | | 28.3 | 28.0 | 27.9 | 27.8 | 27.7 | 27.4 | 27.3 | 27.1 | 28.0 | 28.0 |
| 30.0 | | | | | | | 25.5 | 25.4 | 25.2 | 25.2 | 24.9 | 24.8 | 24.6 | 30.0 | 30.0 |
| 32.0 | | | | | | | 30.7 m/24.8 | 23.4 | 23.1 | 23.0 | 22.7 | 22.6 | 22.4 | 32.0 | 32.0 |
| 34.0 | | | | | | | | 33.3 m/22.1 | 21.2 | 21.1 | 20.8 | 20.7 | 20.5 | 34.0 | 34.0 |
| 36.0 | | | | | | | | | 35.9 m/19.7 | 19.5 | 19.2 | 19.1 | 18.9 | 36.0 | 36.0 |
| 38.0 | | | | | | | | | | 18.0 | 17.7 | 17.6 | 17.4 | 38.0 | 38.0 |
| 40.0 | | | | | | | | | | 38.6 m/17.6 | 16.4 | 16.3 | 16.1 | 40.0 | 40.0 |
| 42.0 | | | | | | | | | | | 41.2 m/15.7 | 15.2 | 14.9 | 42.0 | 42.0 |
| 44.0 | | | | | | | | | | | | 43.9 m/14.2 | 13.9 | 44.0 | 44.0 |
| 46.0 | | | | | | | | | | | | | 13.0 | 46.0 | 46.0 |
| 48.0 | | | | | | | | | | | | | 46.5 m/12.8 | 48.0 | 48.0 |
| Reeves | 22 | 18 | 16 | 14 | 14 | 12 | 12 | 10 | 10 | 8 | 8 | 7 | 7 | Reeves | Reeves |

| Working radius (m) | Boom Length (m) | | | | | | | | | | | | | Working radius (m) | |
|--------------------|-----------------|-------------|-------------|-------------|-------------|------------|-------------|-------------|-------------|-------------|-------------|-------------|-------------|--------------------|--------|
| | 54.9 | 57.9 | 61.0 | 64.0 | 67.1 | 70.1 | 73.2 | 76.2 | 79.3 | 82.3 | 85.3 | 88.4 | 91.4 | | |
| 10.0 | 11.4 m/81.4 | 11.9 m/76.1 | | | | | | | | | | | | | 10.0 |
| 12.0 | 78.0 | 75.5 | 12.4 m/68.8 | 12.9 m/67.5 | 13.5 m/63.8 | | | | | | | | | | 12.0 |
| 14.0 | 66.5 | 65.2 | 63.3 | 62.5 | 61.3 | 59.4 | 14.5 m/54.5 | 15.1 m/49.1 | 15.6 m/44.7 | | | | | | 14.0 |
| 16.0 | 57.5 | 56.4 | 55.4 | 54.2 | 53.2 | 51.2 | 51.1 | 48.4 | 44.5 | 16.1 m/40.9 | 16.6 m/37.4 | 17.2 m/33.8 | 17.7 m/31.0 | 16.0 | 16.0 |
| 18.0 | 50.0 | 49.5 | 48.6 | 47.6 | 46.8 | 45.6 | 44.9 | 44.2 | 43.2 | 39.7 | 36.6 | 33.3 | 30.9 | 18.0 | 18.0 |
| 20.0 | 43.2 | 43.0 | 42.9 | 42.2 | 41.5 | 40.6 | 39.9 | 39.2 | 38.4 | 37.6 | 35.4 | 32.2 | 29.8 | 20.0 | 20.0 |
| 22.0 | 37.8 | 37.7 | 37.5 | 37.3 | 37.2 | 36.5 | 35.7 | 35.1 | 34.4 | 33.6 | 32.9 | 31.2 | 28.8 | 22.0 | 22.0 |
| 24.0 | 33.5 | 33.3 | 33.2 | 32.9 | 32.9 | 32.6 | 32.2 | 31.6 | 30.9 | 30.2 | 29.6 | 29.2 | 27.7 | 24.0 | 24.0 |
| 26.0 | 29.9 | 29.7 | 29.6 | 29.4 | 29.3 | 29.0 | 28.9 | 28.6 | 28.0 | 27.3 | 26.8 | 26.3 | 25.7 | 26.0 | 26.0 |
| 28.0 | 26.9 | 26.8 | 26.6 | 26.4 | 26.3 | 26.0 | 25.9 | 25.8 | 25.4 | 24.8 | 24.3 | 23.9 | 23.3 | 28.0 | 28.0 |
| 30.0 | 24.4 | 24.2 | 24.1 | 23.8 | 23.7 | 23.5 | 23.3 | 23.2 | 23.0 | 22.6 | 22.1 | 21.7 | 21.2 | 30.0 | 30.0 |
| 32.0 | 22.2 | 22.0 | 21.9 | 21.6 | 21.5 | 21.3 | 21.1 | 21.0 | 20.8 | 20.5 | 20.2 | 19.8 | 19.3 | 32.0 | 32.0 |
| 34.0 | 20.3 | 20.1 | 20.0 | 19.7 | 19.6 | 19.4 | 19.2 | 19.1 | 18.9 | 18.6 | 18.4 | 18.1 | 17.6 | 34.0 | 34.0 |
| 36.0 | 18.6 | 18.5 | 18.3 | 18.1 | 17.9 | 17.7 | 17.5 | 17.4 | 17.2 | 16.9 | 16.8 | 16.6 | 16.1 | 36.0 | 36.0 |
| 38.0 | 17.2 | 17.0 | 16.9 | 16.6 | 16.5 | 16.2 | 16.0 | 15.9 | 15.7 | 15.4 | 15.3 | 15.2 | 14.7 | 38.0 | 38.0 |
| 40.0 | 15.9 | 15.7 | 15.5 | 15.3 | 15.2 | 14.9 | 14.7 | 14.6 | 14.4 | 14.1 | 13.9 | 13.8 | 13.5 | 40.0 | 40.0 |
| 42.0 | 14.7 | 14.5 | 14.4 | 14.1 | 14.0 | 13.7 | 13.5 | 13.4 | 13.2 | 12.9 | 12.8 | 12.7 | 12.4 | 42.0 | 42.0 |
| 44.0 | 13.7 | 13.5 | 13.3 | 13.0 | 12.9 | 12.6 | 12.5 | 12.3 | 12.1 | 11.8 | 11.7 | 11.6 | 11.3 | 44.0 | 44.0 |
| 46.0 | 12.7 | 12.5 | 12.4 | 12.1 | 12.0 | 11.7 | 11.5 | 11.4 | 11.2 | 10.9 | 10.7 | 10.6 | 10.4 | 46.0 | 46.0 |
| 48.0 | 11.9 | 11.6 | 11.5 | 11.2 | 11.1 | 10.8 | 10.7 | 10.5 | 10.3 | 10.0 | 9.8 | 9.7 | 9.4 | 48.0 | 48.0 |
| 50.0 | 49.1 m/11.4 | 10.9 | 10.7 | 10.4 | 10.3 | 10.0 | 9.9 | 9.7 | 9.5 | 9.1 | 8.9 | 8.8 | 8.5 | 50.0 | 50.0 |
| 52.0 | | 51.8 m/10.2 | 10.0 | 9.7 | 9.6 | 9.3 | 9.1 | 8.9 | 8.7 | 8.3 | 8.1 | 8.0 | 7.7 | 52.0 | 52.0 |
| 54.0 | | | 9.3 | 9.1 | 8.9 | 8.6 | 8.4 | 8.2 | 7.9 | 7.6 | 7.4 | 7.2 | 7.0 | 54.0 | 54.0 |
| 56.0 | | | 54.4 m/9.2 | 8.4 | 8.3 | 7.9 | 7.7 | 7.5 | 7.2 | 6.9 | 6.7 | 6.5 | 6.3 | 56.0 | 56.0 |
| 58.0 | | | | 57.1 m/8.1 | 7.7 | 7.3 | 7.1 | 6.9 | 6.6 | 6.3 | 6.1 | 5.9 | 5.6 | 58.0 | 58.0 |
| 60.0 | | | | | 59.7 m/7.2 | 6.7 | 6.5 | 6.3 | 6.0 | 5.7 | 5.5 | 5.3 | 5.0 | 60.0 | 60.0 |
| 62.0 | | | | | | 6.2 | 6.0 | 5.8 | 5.5 | 5.1 | 4.9 | 4.8 | 4.5 | 62.0 | 62.0 |
| 64.0 | | | | | | 62.3 m/6.1 | 5.5 | 5.3 | 5.0 | 4.6 | 4.4 | 4.3 | 4.0 | 64.0 | 64.0 |
| 66.0 | | | | | | | 65.0 m/5.3 | 4.8 | 4.5 | 4.2 | 4.0 | 3.8 | 3.5 | 66.0 | 66.0 |
| 68.0 | | | | | | | | 67.6 m/4.5 | 4.1 | 3.7 | 3.5 | 3.3 | 2.9 | 68.0 | 68.0 |
| 70.0 | | | | | | | | | 3.7 | 3.3 | 3.1 | 2.9 | 2.4 | 70.0 | 70.0 |
| 72.0 | | | | | | | | | 70.2 m/3.6 | 2.9 | 2.7 | 2.5 | | 72.0 | 72.0 |
| 74.0 | | | | | | | | | | 72.9 m/2.8 | 2.4 | | | 74.0 | 74.0 |
| Reeves | 7 | 6 | 6 | 5 | 5 | 5 | 5 | 4 | 4 | 4 | 3 | 3 | 3 | Reeves | Reeves |

Note: Ratings according to EN13000.

Ratings shown in are determined by the strength of the boom or other structural components.

Refer to notes P12.