

Technical Data

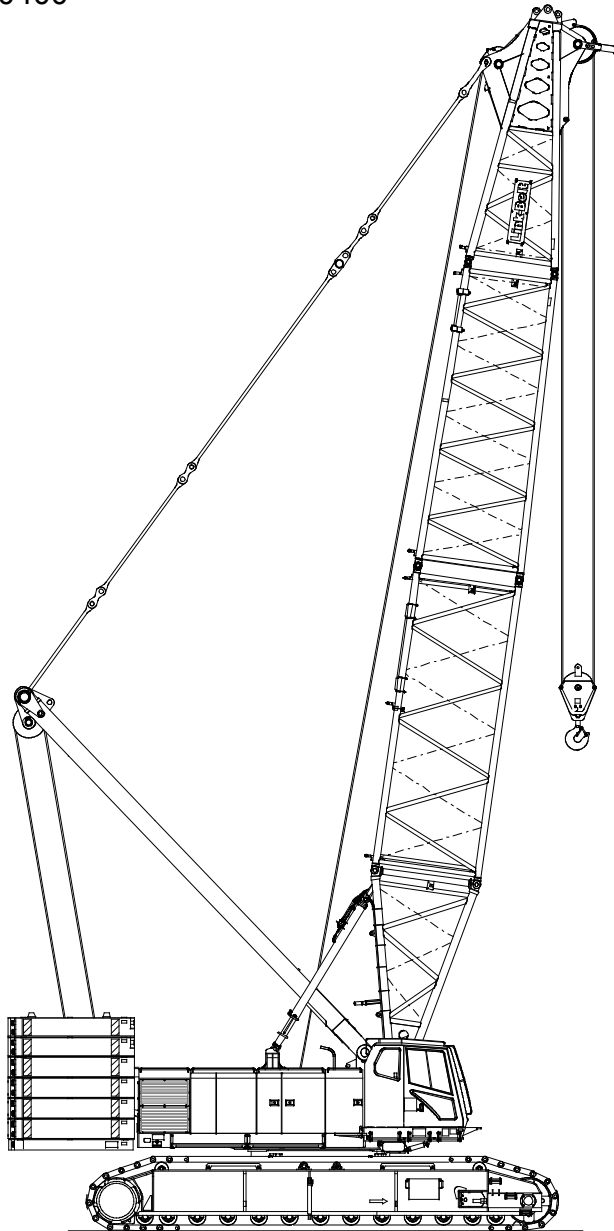
Specifications & Capacities



Lampson (Australia) Pty Ltd
www.lampson.com.au
02 4941 0400

348 HYLAB 5

Crawler Crane
300 Ton (272.16 metric ton)

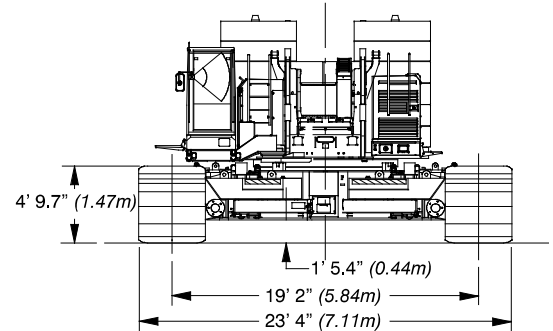
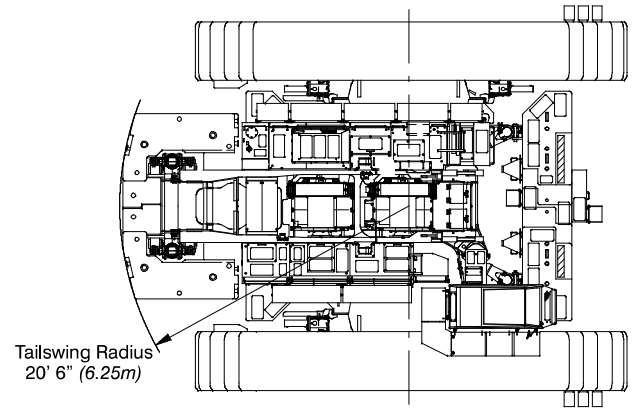
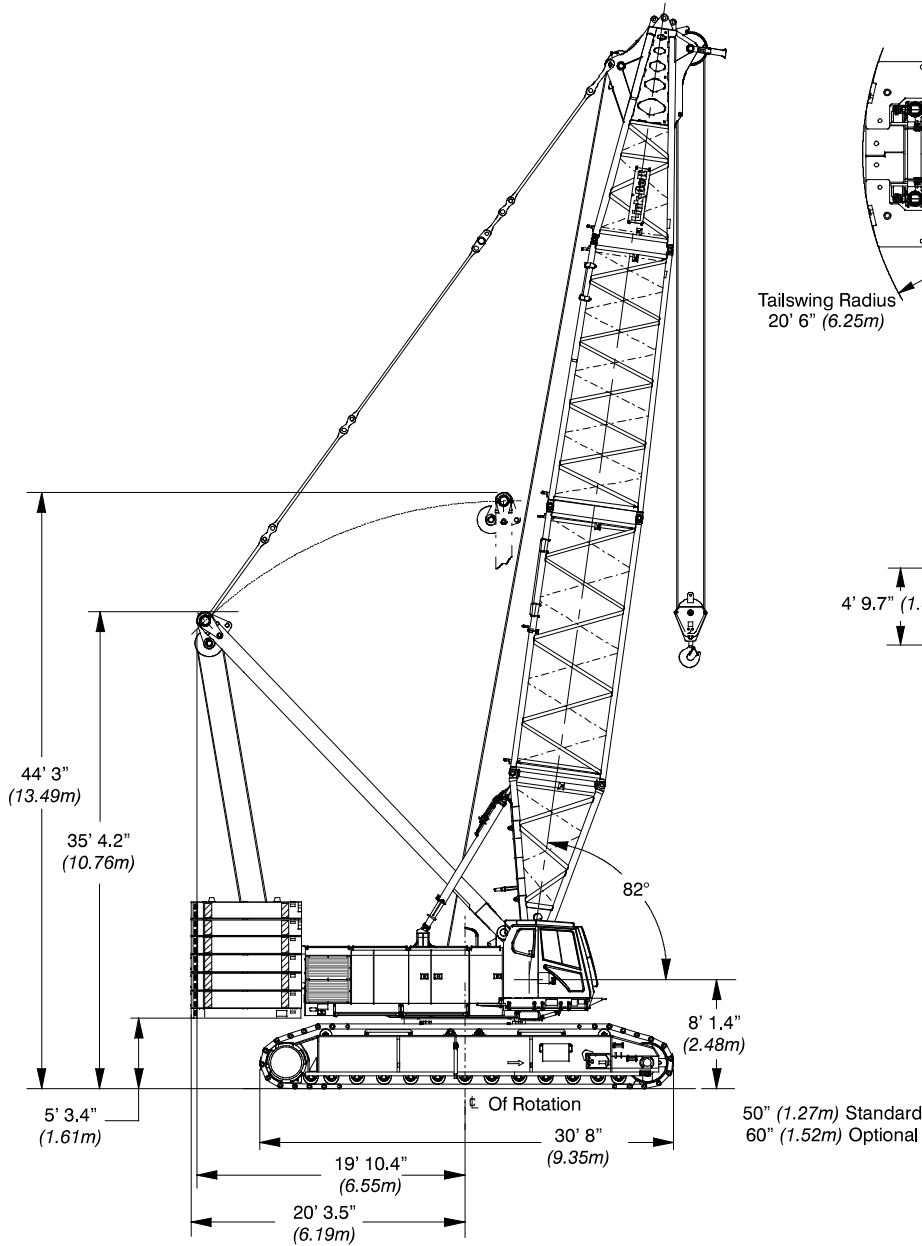


CAUTION: This material is supplied for reference use only. Operator must refer to in-cab Crane Rating Manual and Operator's Manual to determine allowable crane lifting capacities and assembly and operating procedures.

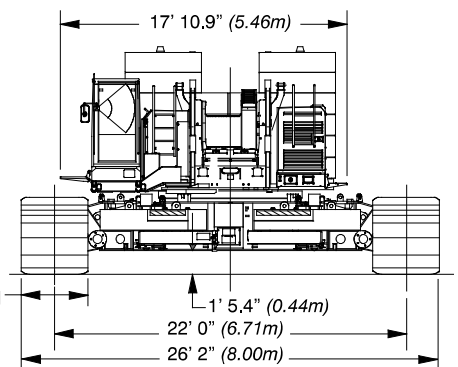


Dimensions

General Dimensions	English	Metric
Basic Boom	70 ft	21.34m
Minimum Load Radius	15.51 ft	4.73m
Maximum Boom Angle	82°	82°
Ground clearance (jacks)	1' 5.44"	0.44m
Track Shoe Width	50 in	1.27m
Optional track Shoe Width	60 in	1.52m

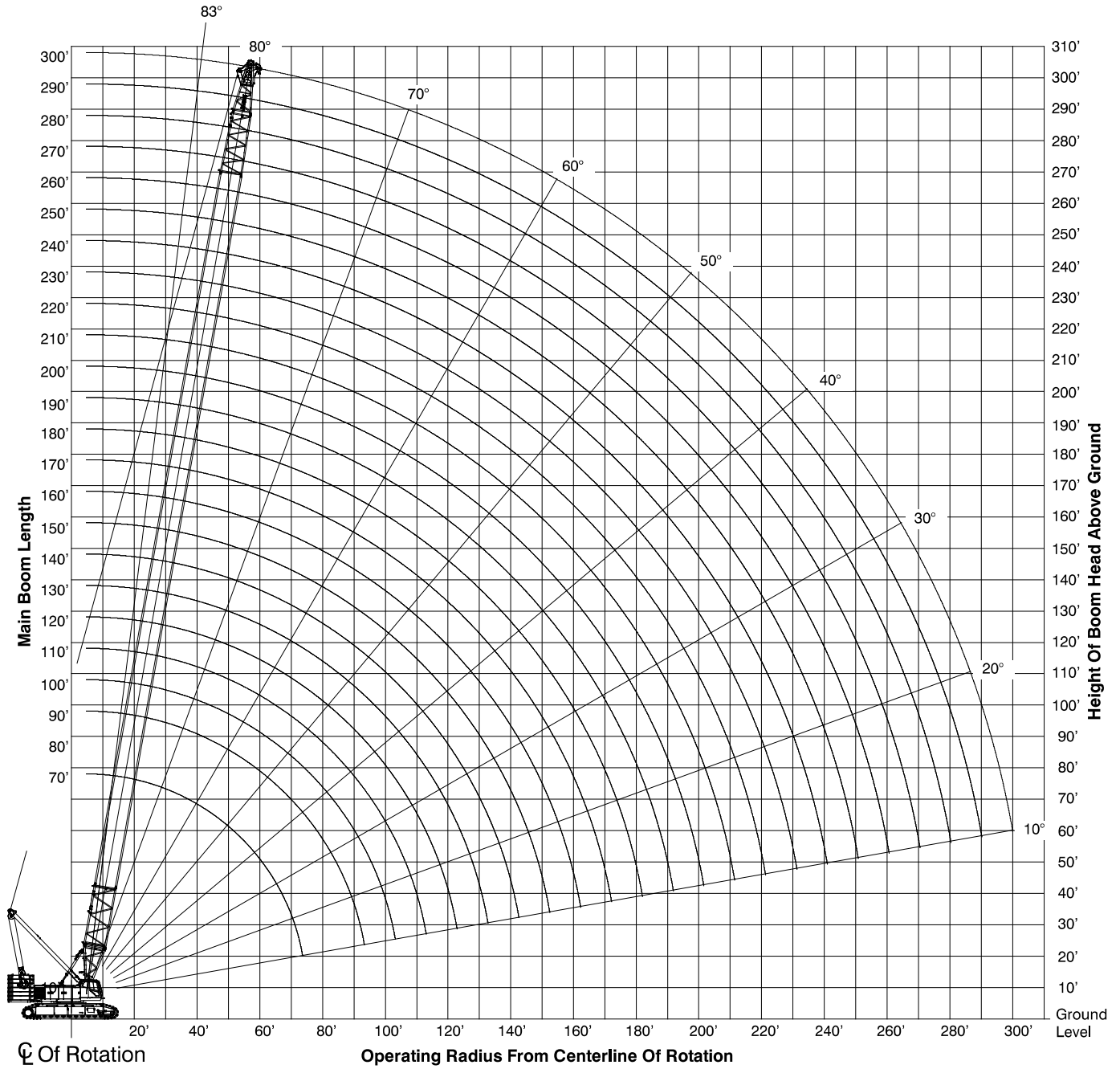


Retracted



Extended

Working Range Diagram – Extended Gauge



Notes:

1. Boom geometry shown is for unloaded condition and crane standing level on firm supporting surface. Boom deflection, subsequent radius, and boom angle change must be accounted for when applying load to hook.

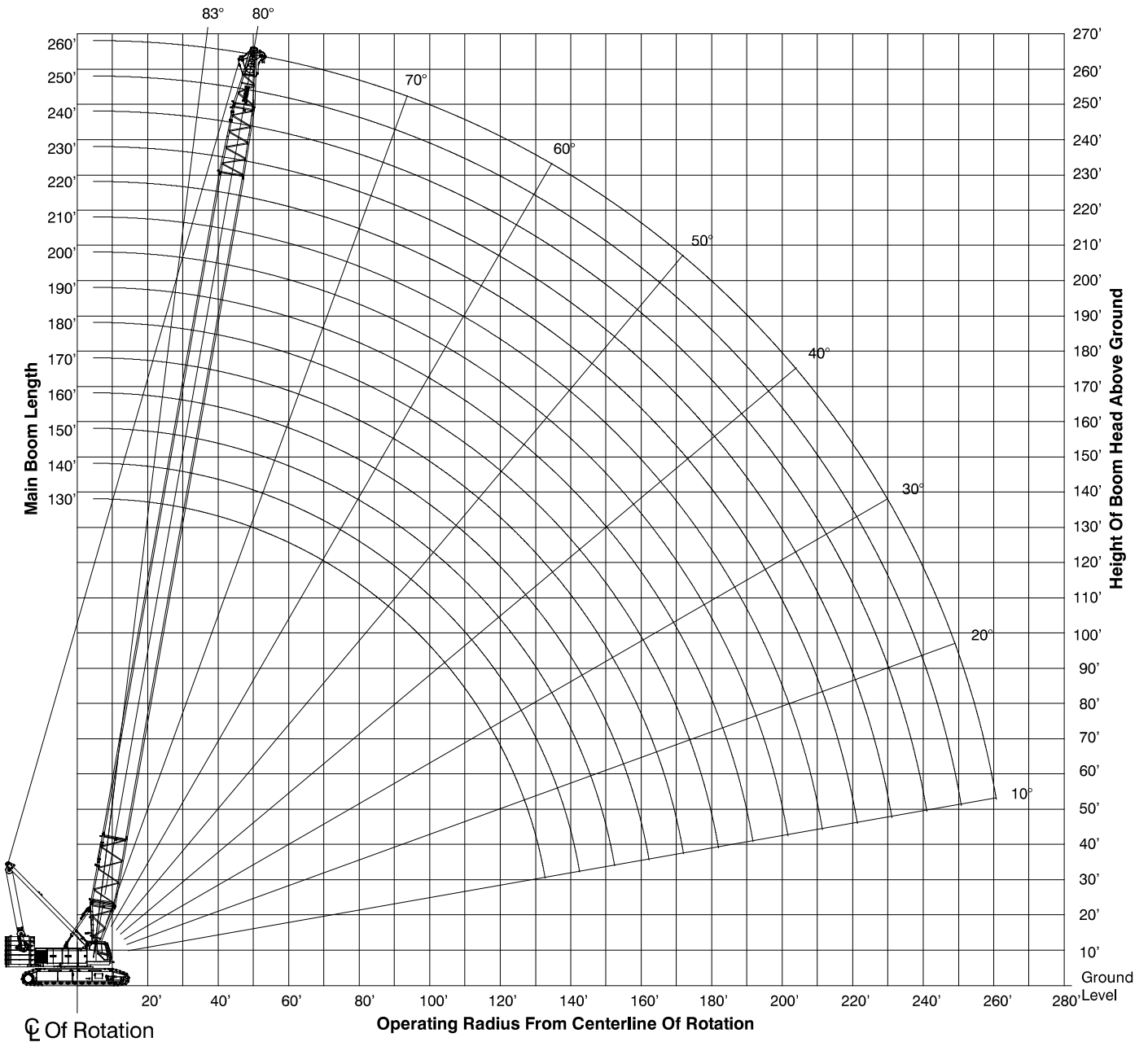
Load Chart – Extended Gauge

Heavy Duty Boom With Heavy Duty Top – Extended Gauge (22') – 360° Rotation ABC + A [221,300 + 75,000 lb (100.3 + 34.0mt)] Ctwrt [All capacities are listed in kips (mt)]														
Load Radius ft (m)	Boom Length ft (m)												Load Radius ft (m)	
	70 (21.34)	90 (27.43)	110 (33.53)	130 (39.62)	150 (45.72)	170 (51.82)	190 (57.91)	210 (64.01)	230 (70.10)	250 (76.20)	270 (82.30)	290 (88.39)		300 (91.44)
16 (4.88)	600.0 (272.7)													16 (4.88)
17 (5.18)	569.0 (258.6)													17 (5.18)
18 (5.49)	539.8 (245.4)													18 (5.49)
19 (5.79)	513.5 (233.4)	510.1 (231.9)												19 (5.79)
20 (6.10)	489.4 (222.5)	486.4 (221.1)												20 (6.10)
30 (9.14)	331.2 (150.5)	329.8 (149.9)	327.8 (149.0)	325.5 (148.0)	322.9 (146.8)	308.7 (140.3)								30 (9.14)
40 (12.19)	235.1 (106.9)	235.6 (107.1)	235.5 (107.0)	235.2 (106.9)	234.8 (106.7)	234.4 (106.5)	233.9 (106.3)	225.3 (102.4)	186.9 (85.0)	153.4 (69.7)	128.5 (58.4)			40 (12.19)
50 (15.24)	170.9 (77.7)	171.2 (77.8)	171.0 (77.7)	170.6 (77.5)	170.0 (77.3)	169.4 (77.0)	168.7 (76.7)	168.0 (76.4)	167.2 (76.0)	151.5 (68.9)	126.9 (57.7)	105.3 (47.9)	97.5 (44.3)	50 (15.24)
60 (18.29)	132.9 (60.4)	133.3 (60.6)	133.0 (60.5)	132.4 (60.2)	131.8 (59.9)	131.0 (59.5)	130.2 (59.2)	129.4 (58.8)	128.6 (58.5)	127.8 (58.1)	118.2 (53.7)	100.0 (45.5)	92.6 (42.1)	60 (18.29)
70 (21.34)	107.5 (48.9)	108.1 (49.1)	107.8 (49.0)	107.2 (48.7)	106.5 (48.4)	105.7 (48.0)	104.9 (47.7)	104.0 (47.3)	103.1 (46.9)	102.1 (46.4)	101.2 (46.0)	92.5 (42.0)	84.5 (38.4)	70 (21.34)
80 (24.38)		90.1 (41.0)	89.9 (40.9)	89.4 (40.6)	88.6 (40.3)	87.8 (39.9)	86.9 (39.5)	85.9 (39.0)	85.0 (38.6)	83.9 (38.1)	82.9 (37.7)	82.0 (37.3)	75.5 (34.3)	80 (24.38)
90 (27.43)		76.5 (34.8)	76.5 (34.8)	76.0 (34.5)	75.2 (34.2)	74.3 (33.8)	73.4 (33.4)	72.4 (32.9)	71.5 (32.5)	70.3 (32.0)	69.3 (31.5)	68.3 (31.0)	67.8 (30.8)	90 (27.43)
100 (30.48)			66.0 (30.0)	65.6 (29.8)	64.8 (29.5)	63.9 (29.0)	63.0 (28.6)	62.0 (28.2)	61.0 (27.7)	59.8 (27.2)	58.7 (26.7)	57.7 (26.2)	57.2 (26.0)	100 (30.48)
110 (33.53)			57.5 (26.1)	57.2 (26.0)	56.5 (25.7)	55.6 (25.3)	54.7 (24.9)	53.7 (24.4)	52.6 (23.9)	51.3 (23.3)	50.3 (22.9)	49.3 (22.4)	48.7 (22.1)	110 (33.53)
120 (36.58)				50.3 (22.9)	49.7 (22.6)	48.8 (22.2)	47.9 (21.8)	46.8 (21.3)	45.8 (20.8)	44.5 (20.2)	43.4 (19.7)	42.4 (19.3)	41.8 (19.0)	120 (36.58)
130 (39.62)				44.5 (20.2)	44.0 (20.0)	43.1 (19.6)	42.2 (19.2)	41.2 (18.7)	40.1 (18.2)	38.8 (17.6)	37.7 (17.1)	36.6 (16.6)	36.1 (16.4)	130 (39.62)
140 (42.67)					39.1 (17.8)	38.3 (17.4)	37.4 (17.0)	36.4 (16.5)	35.3 (16.0)	33.9 (15.4)	32.8 (14.9)	31.8 (14.5)	31.2 (14.2)	140 (42.67)
150 (45.72)					34.8 (15.8)	34.1 (15.5)	33.2 (15.1)	32.2 (14.6)	31.2 (14.2)	29.8 (13.5)	28.7 (13.0)	27.6 (12.5)	27.0 (12.3)	150 (45.72)
160 (48.77)						30.5 (13.9)	29.6 (13.5)	28.6 (13.0)	27.6 (12.5)	26.2 (11.9)	25.1 (11.4)	24.0 (10.9)	23.4 (10.6)	160 (48.77)
170 (51.82)						27.2 (12.4)	26.5 (12.0)	25.5 (11.6)	24.4 (11.1)	23.0 (10.5)	21.9 (10.0)	20.8 (9.5)	20.3 (9.2)	170 (51.82)
180 (54.86)							23.6 (10.7)	22.7 (10.3)	21.7 (9.9)	20.2 (9.2)	19.1 (8.7)	18.0 (8.2)	17.5 (8.0)	180 (54.86)
190 (57.91)							21.0 (9.5)	20.2 (9.2)	19.2 (8.7)	17.7 (8.0)	16.7 (7.6)	15.6 (7.1)	15.0 (6.8)	190 (57.91)
200 (60.96)								17.9 (8.1)	16.9 (7.7)	15.5 (7.0)	14.4 (6.5)	13.3 (6.0)	12.8 (5.8)	200 (60.96)
220 (67.06)									13.0 (5.9)	11.6 (5.3)	10.6 (4.8)	9.5 (4.3)	8.9 (4.0)	220 (67.06)
240 (73.15)										8.4 (3.8)	7.4 (3.4)	6.3 (2.9)	5.8 (2.6)	240 (73.15)
260 (79.25)											4.6 (2.1)	3.6 (1.6)	3.1 (1.4)	260 (79.25)
270 (82.30)											4.6 (2.1)	3.6 (1.6)		270 (82.30)

This material is supplied for reference use only. Operator must refer to in-cab Crane Rating Manual and Operator's Manual to determine allowable crane lifting capacities and assembly and operating procedures.



Working Range Diagram – Retracted Gauge



Notes:

1. Boom geometry shown is for unloaded condition and crane standing level on firm supporting surface. Boom deflection, subsequent radius, and boom angle change must be accounted for when applying load to hook.

Load Chart – Retracted Gauge

Heavy Duty Boom With Heavy Duty Top – Retracted Gauge (19' 2") – 360° Rotation														
[All capacities are listed in kips (mt)]														
Load Radius ft (m)	Boom Length ft (m)													Load Radius ft (m)
	AB + A [172,800 + 75,000 lb (78.3 + 34.0mt)] Cwt						ABC + A [221,300 + 75,000 lb (100.3 + 34.0mt)] Cwt							
	70 (21.34)	90 (27.43)	110 (33.53)	130 (39.62)	150 (45.72)	170 (51.82)	190 (57.91)	210 (64.01)	230 (70.10)	250 (76.20)	270 (82.30)	290 (88.39)	300 (91.44)	
16 (4.88)	561.7 (255.3)													16 (4.88)
17 (5.18)	531.4 (241.5)													17 (5.18)
18 (5.49)	504.1 (229.1)													18 (5.49)
19 (5.79)	479.4 (217.9)	476.4 (216.5)												19 (5.79)
20 (6.10)	456.9 (207.7)	454.2 (206.5)												20 (6.10)
30 (9.14)	268.7 (122.1)	269.3 (122.4)	269.5 (122.5)	269.4 (122.5)	269.3 (122.4)	308.7 (140.3)								30 (9.14)
40 (12.19)	175.3 (79.7)	175.6 (79.8)	175.4 (79.7)	175.1 (79.6)	174.6 (79.4)	205.6 (93.5)	205.0 (93.2)	204.4 (92.9)	186.9 (85.0)	153.4 (69.7)	128.5 (58.4)			40 (12.19)
50 (15.24)	128.3 (58.3)	128.5 (58.4)	128.2 (58.3)	127.7 (58.0)	127.0 (57.7)	150.0 (68.2)	149.3 (67.9)	148.5 (67.5)	147.7 (67.1)	147.1 (66.9)	126.9 (57.7)	105.3 (47.9)	97.5 (44.3)	50 (15.24)
60 (18.29)	99.8 (45.4)	100.1 (45.5)	99.8 (45.4)	99.2 (45.1)	98.4 (44.7)	116.6 (53.0)	115.8 (52.6)	114.9 (52.2)	114.0 (51.8)	113.2 (51.5)	112.3 (51.0)	100.0 (45.5)	92.6 (42.1)	60 (18.29)
70 (21.34)	80.5 (36.6)	81.1 (36.9)	80.7 (36.7)	80.1 (36.4)	79.3 (36.0)	94.3 (42.9)	93.4 (42.5)	92.5 (42.0)	91.5 (41.6)	90.5 (41.1)	89.6 (40.7)	88.6 (40.3)	84.5 (38.4)	70 (21.34)
80 (24.38)		67.3 (30.6)	67.1 (30.5)	66.4 (30.2)	65.7 (29.9)	78.3 (35.6)	77.4 (35.2)	76.4 (34.7)	75.4 (34.3)	74.3 (33.8)	73.3 (33.3)	72.3 (32.9)	71.8 (32.6)	80 (24.38)
90 (27.43)		56.7 (25.8)	56.7 (25.8)	56.2 (25.5)	55.4 (25.2)	66.3 (30.1)	65.4 (29.7)	64.4 (29.3)	63.4 (28.8)	62.2 (28.3)	61.1 (27.8)	60.1 (27.3)	59.6 (27.1)	90 (27.43)
100 (30.48)			48.6 (22.1)	48.1 (21.9)	47.3 (21.5)	57.0 (25.9)	56.0 (25.5)	55.0 (25.0)	54.0 (24.5)	52.7 (24.0)	51.6 (23.5)	50.6 (23.0)	50.1 (22.8)	100 (30.48)
110 (33.53)			41.9 (19.0)	41.6 (18.9)	40.9 (18.6)	49.5 (22.5)	48.5 (22.0)	47.5 (21.6)	46.4 (21.1)	45.1 (20.5)	44.0 (20.0)	43.0 (19.5)	42.4 (19.3)	110 (33.53)
120 (36.58)				36.2 (16.5)	35.6 (16.2)	43.3 (19.7)	42.3 (19.2)	41.3 (18.8)	40.2 (18.3)	38.9 (17.7)	37.8 (17.2)	36.7 (16.7)	36.2 (16.5)	120 (36.58)
130 (39.62)				31.6 (14.4)	31.1 (14.1)	38.2 (17.4)	37.2 (16.9)	36.2 (16.5)	35.1 (16.0)	33.7 (15.3)	32.6 (14.8)	31.5 (14.3)	31.0 (14.1)	130 (39.62)
140 (42.67)					27.2 (12.4)	33.8 (15.4)	32.8 (14.9)	31.8 (14.5)	30.7 (14.0)	29.3 (13.3)	28.2 (12.8)	27.1 (12.3)	26.5 (12.0)	140 (42.67)
150 (45.72)					23.8 (10.8)	30.0 (13.6)	29.0 (13.2)	28.0 (12.7)	26.9 (12.2)	25.5 (11.6)	24.4 (11.1)	23.3 (10.6)	22.7 (10.3)	150 (45.72)
160 (48.77)						26.6 (12.1)	25.8 (11.7)	24.7 (11.2)	23.7 (10.8)	22.2 (10.1)	21.1 (9.6)	20.0 (9.1)	19.5 (8.9)	160 (48.77)
170 (51.82)						23.6 (10.7)	22.8 (10.4)	21.9 (10.0)	20.8 (9.5)	19.4 (8.8)	18.3 (8.3)	17.1 (7.8)	16.6 (7.5)	170 (51.82)
180 (54.86)							20.2 (9.2)	19.3 (8.8)	18.3 (8.3)	16.8 (7.6)	15.7 (7.1)	14.6 (6.6)	14.0 (6.4)	180 (54.86)
190 (57.91)							17.8 (8.1)	17.0 (7.7)	16.0 (7.3)	14.5 (6.6)	13.4 (6.1)	12.3 (5.6)	11.7 (5.3)	190 (57.91)
200 (60.96)								14.9 (6.8)	13.9 (6.3)	12.5 (5.7)	11.4 (5.2)	10.3 (4.7)	9.7 (4.4)	200 (60.96)
220 (67.06)									10.4 (4.7)	8.9 (4.0)	7.9 (3.6)	6.8 (3.1)	6.2 (2.8)	220 (67.06)
240 (73.15)										5.9 (2.7)	4.9 (2.2)	3.8 (1.7)	3.3 (1.5)	240 (73.15)
250 (76.20)										4.5 (2.0)	3.6 (1.6)	2.5 (1.1)	2.0 (0.9)	250 (76.20)
260 (79.25)											2.4 (1.1)			260 (79.25)

This material is supplied for reference use only. Operator must refer to in-cab Crane Rating Manual and Operator's Manual to determine allowable crane lifting capacities and assembly and operating procedures.

