

model 777

product guide

Lampson

Lampson (Australia) Pty Ltd
www.lampson.com.au

02 4941 0400

features

- 181 mton (200 ton) capacity
- 667 mton-m (4,830 ft-kips) Maximum Load Moment
- 82,3 m (270') Heavy-Lift Boom
- 91,4 m (300') Fixed Jib on Heavy-Lift Boom
- 106,7 m (350') Luffing Jib on Heavy-Lift Boom
- 125,0 m (410') Fixed Jib on Luffing Jib on Heavy-Lift Boom
- 253 kW (340 HP) engine standard
- EPIC® controls
- 135 m/min (442 fpm) line speed standard
- 205 m/min (674 fpm) line speed optional
- 131 kN (29,500 lb) line pull standard
- 196 kN (44,000 lb) line pull optional
- 13 380 kg (29,500 lb) Clamshell capacity
- 9 072 kg (20,000 lb) Dragline capacity
- Hydraulic-cylinder Boom Hoist for maximum performance with minimum maintenance
- Fast, efficient self-assembly
- Complete crane, maximum boom, fixed jib and counterweights ship on only 8 trucks
- Manitowoc Crane CARE

contents

Specifications	3
Outline Dimensions	6
Transport / Assembly	11
Performance Data	13
Boom Combinations	20
Main Boom Range / Load Charts	22
Fixed Jib Range / Load Charts	24
Luffing Jib Range / Load Charts	27
Fixed Jib on Luffing Jib Range / Load Charts	31
Crane CARE	35

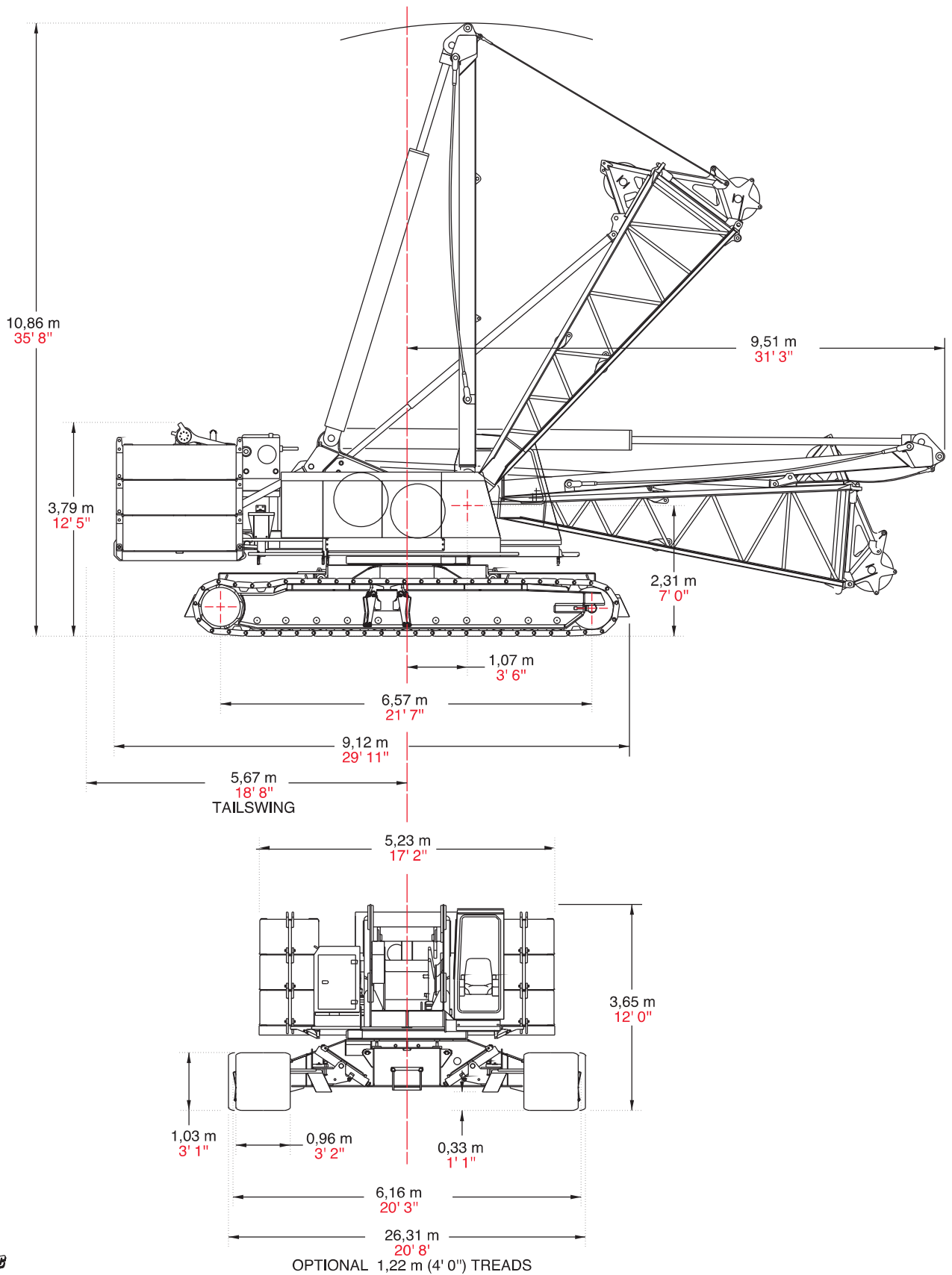
Manitowoc

Lampson

Lampson Australia - info@lampson.com.au - 02 4941 0400

outline dimensions

6



model 777
Manitowoc

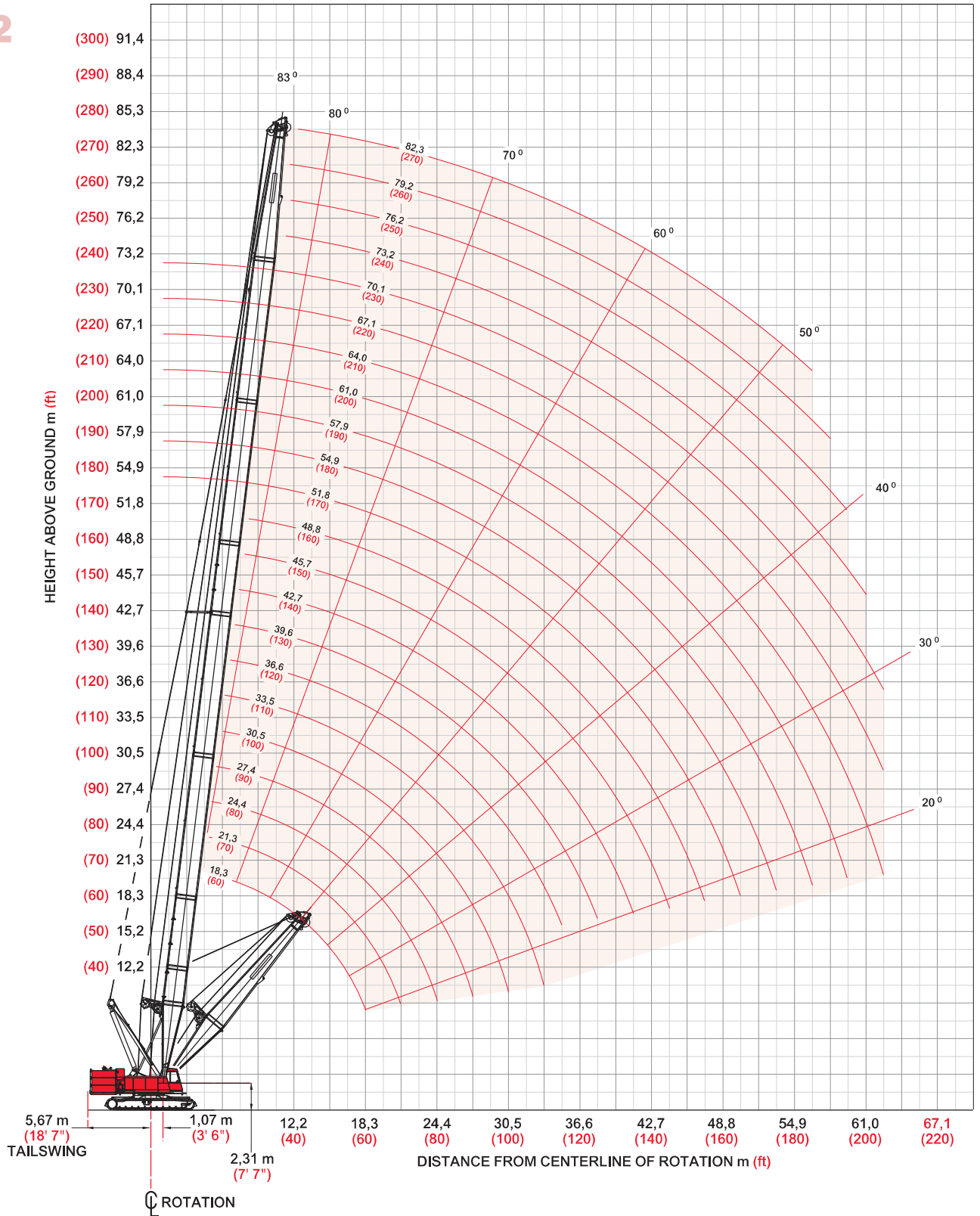
Lampson

Lampson Australia - info@lampson.com.au - 02 4941 0400

heavy-lift boom range diagram

22

No. 78 Main Boom



model 777
Manitowoc

